



**TANO SOUTH
MUNICIPAL
ASSEMBLY**

Office Of the Municipal Administration
Tano South Municipal Assembly
Post Office Box 32
Bechem, Ahafo Region
Tel: 0208206795 /0243205248

2020 ANNUAL PROGRESS REPORT

ON THE IMPLEMENTATION OF DISTRICT MEDIUM TERM DEVELOPMENT PLAN (2018 -2021)

UNDER THE POLICY FRAMEWORK “AGENDA FOR JOBS: CREATING PROSPERITY AND EQUAL OPPORTUNITY FOR ALL”

Prepared by:

MUNICIPAL PLANNING CO-ORDINATING UNIT
TANO SOUTH MUNICIPAL ASSEMBLY
BECHEM

FEBRUARY, 2021.

CONTENT	PAGE
Table of Contents.....	i
List of Tables.....	iii
List of Figures.....	iv
List of Acronyms.....	v

CHAPTER ONE
GENERAL INTRODUCTION

1.1 Introduction.....	1
1.2 Purpose of M&E for 2020 Plan Period.....	1
1.3 Summary of Achievements of the Implementation of the DMTDP.....	2
1.4 Challenges Encountered in the Implementation of the DMTDP including M&E Challenges....	6
1.5 Process Involved.....	6

CHAPTER TWO
MONITORING AND EVALUATION ACTIVITIES REPORT

2.1 Introduction.....	8
2.2 Programmes/Project Status for the year 2020.....	8
2.3 Update on Revenue Sources.....	47
2.4 Update on Expenditure.....	49
2.5 Update on indicators and Targets.....	50
2.6 Update on Critical Development and Poverty Issues in 2020.....	68
2.6.1 Critical Development and Poverty Issues.....	68
2.7 Corona Virus (Covid-19) Pandemic Situation.....	69
2.8 Evaluations Conducted, their Findings and Recommendations.....	77
2.9 Participatory Monitoring and evaluation (M&E) Approaches used and the Results.....	79

CHAPTER THREE
CONCLUSION AND WAY FORWARD

3.1 Way Forward.....	80
3.2 Recommendations.....	82
3.3 Conclusion.....	82

LIST OF TABLES

Table 1.1 Proportion of MTDP Implemented	2
Table 2.1 Project Register	9
Table 2.2 Programme Register	22
Table 2.3 Revenue Sources	48
Table 2.4 Expenditure	49
Table 2.5 Update on Core indicators and District Specific Performance Indicators	50
Table 2.6 Provision of PPE.....	59
Table 2.7 Summary of Allocations, Actual Receipts and Beneficiaries for 2020	68
Table 2.8 Beneficiaries of Ghana School Feeding Programme.....	70
Table 2.9 Distribution of PPEs to Health Facilities in the Municipality.....	70
Table 2.10 Distribution of PPEs to final year students of Second cycle and Basic Schools in the Municipality.....	71
Table 2.11 Suspected and Confirmed Cases.....	72
Table 2.12 Number of PWDs registered.....	74
Table 2.13 Support to PWD Received.....	74
Table 2.14 Number of child rights cases reported and handled.....	75
Table 2.15 Update on Evaluations Conducted	77
Table 2.16 Update on PM&E Conducted	79

LIST OF FIGURES

Figure 1.1: Implementation Status of AAP under Development Dimensions.....	3
Figure 1.2: Implementation Status of AAP under Departments.....	4
Figure 1.3: Implementation Status of AAP under Sectors.....	5
Figure 2.1 Total Output in Agricultural Production (Crop).....	55
Figure 2.2 Total Output in Agricultural Production (Livestock).....	56
Figure 2.3 Net Enrollment Ratio.....	57
Figure 2.4 Update on Gender Parity Index	58
Figure 2.5 Update on Completion Rate	58
Figure 2.6 Update on Number of Operational Health Facilities.....	60
Figure 2.7 Update on Proportion of Population with Valid NHIS Card.....	60
Figure 2.8 Update on Beneficiaries with Valid NHIS Card	61
Figure 2.9 Update on Covid-19 Cases	62
Figure 2.10 Number of Birth Registered	62
Figure 2.11 Number of Deaths Registered	63
Figure 2.12 Access to Safe Drinking Water	64
Figure 2.13 Access to Improved Sanitation Services	65
Figure 2.14 Road Network in Good Condition.....	66
Figure 2.15 Number of Contacts Traced of Confirmed Cases.....	72
Figure 2.16 Imported Cases and Contacts Traced	73

LIST OF ACRONYMS

AAP	-	Annual Action Plan
AEAs	-	Agric Extension Agents
AFSRWSP	-	Additional Financing – Sustainable Rural Water and Sanitation Project
AIDS	-	Acquired Immune Deficiency Syndrome
APR	-	Annual Progress Report
ARH	-	Adolescent Reproductive Health
BECE	-	Basic Education Certificate Examination
CAAP	-	Composite Annual Action Plan
CBOs	-	Community Based Organisations
CBPP	-	Contagious Bovine Pleuropneumonia
CBRDP	-	Community Based Rural Development Programme
CDD	-	Centre for Democratic Development
CHNS	-	Community Health Nurses
CHPS	-	Community Health-based Planning System
COHBS	-	Committee of Heads of Basic Schools
COVID	-	Corona Virus Disease
CLTS	-	Community Led Total Sanitation
CSOs	-	Civil Society Organizations
CWSA	-	Community Water and Sanitation Agency
DACF	-	District Assembly Common Fund
DDF	-	District Development Fund
DMTDP	-	District Medium Term Development Plan
DPAT	-	District Performance Assessment Tool
DPCU	-	District Planning Coordinating Unit

DST	-	District Safeguard Team
DSWCD	-	Department of Social Welfare and Community Development
DVG	-	District Voluntary Groups
ETC	-	Entity Tender Committee
FBOs	-	Farm Based Organisations
FFR	-	Fee Fixing Resolution
GIFTS	-	Gamete Intrafallopian Transfer
GIFMIS	-	Government Integrated Financial Management
GHARP	-	Ghana Adolescent Reproductive Health Project
GIC	-	Green Innovation Centres
GNFS	-	Ghana National Fire Service
GPSNP	-	Ghana Productive Safety Net Project
GSFP	-	Ghana School Feeding Program
GSGDA	-	Ghana Shared Growth and Development Agenda
GHS	-	Ghana Health Service
GOG	-	Government of Ghana
HIPC	-	Heavily Indebted Poor Countries
HIV	-	Human Immune Virus
IGF	-	Internally Generated Fund
IMO	-	Indigenous Micro-Organism
JHS	-	Junior High School
IPEP	-	Implementation of Infrastructural for Poverty Eradication Programme
KG	-	Kindergarten
KVIP	-	Kumasi Ventilated Improved Pit
LEAP	-	Livelihood Empowerment Against Poverty
LED	-	Local Economic Development
MA	-	Municipal Assembly

MAG	-	Modernizing Agriculture in Ghana
MAOs	-	Municipal Agric Officers
MCH	-	Maternal Child Health
MDA	-	Municipal Director of Agriculture
MDHS	-	Municipal Directorate of Health Service
MDG	-	Millennium Development Goal
M&E	-	Monitoring and Evaluation
MHMT	-	Municipal Health Management Team
MICCS	-	Municipal Inter Agency Coordinating Committee on Sanitation
MMDAs	-	Metropolitan, Municipal and District Assemblies
MMDCDs	-	Metropolitan, Municipal and District Coordinating Directors
MOF	-	Ministry of Finance
MOH	-	Ministry of Health
MP	-	Member of Parliament
MPCU	-	Municipal Planning Coordinating Unit
MSEs	-	Medium and Small-Scale Enterprises
MSHAP	-	Multi-Sectoral HIV and AIDS Programme
MTDPs	-	Medium Term Development Plans
MUSEC	-	Municipal Security Committee
NACAP	-	National Anti-Corruption Action Plan
NABCO	-	Nation Builders Corps
NADMO	-	National Disaster Management Organization
NEIP	-	National Entrepreneurship and Innovation plan
NGO	-	Non-Governmental Organization
NHIS	-	National Health Insurance Scheme
NSS	-	National Service Scheme

ODF	-	Open Defecation Free
1D1F	-	One District, One Factory
OPD	-	Out Patient Department
OSIWA	-	Open Society Initiative for West Africa
OVC	-	Orphan and Vulnerable Children
PPE	-	Personal Protective Equipment
PERD	-	Production, Export and Rural Development
PFJE	-	Planting for Food, Jobs and Export
PFJP	-	Planting for Food and Jobs Programme
PHC	-	Primary Health Care
PLWDs	-	Persons Living with Disabilities
PLWHA	-	People Living with Hiv/Aids
PM&E	-	Participatory Monitoring and Evaluation
PMTCT	-	Parental Mother to Child Transmission
PPP	-	Public-Private Partnership
PWDs	-	People with Disabilities
PWDs CF	-	People with Disabilities Common Fund
RCH	-	Reproductive and Child Health
RELC	-	Research Extension Farmer Linkage Committee
RFJ	-	Rearing for Food and Jobs
RPCU	-	Regional Planning Coordinating Unit
RSTWSSP	-	Rural and Small-Town Water Supply Sanitation Project
SDGs	-	Sustainable Development Goals
SHS	-	Senior High School

SMEs	-	Small and Medium Enterprises
SODIA	-	Social Development and Improvement Agency
SRWSP	-	Sustainable Rural Water and Sanitation Project
SSNIT	-	Social Security National Insurance Trust
T/A	-	Town/Area Council
TEP	-	Tender Evaluation Panel
TO	-	Tender Opening
TSMA	-	Tano South Municipal Assembly
TVET	-	Technical and Vocational Education and Training
UNICEF	-	United Nations International Children’s Education Fund
USAID	-	United States Agency for International Development
UTI	-	Urinary Tract Infection
WATSAN	-	Water and Sanitation Committee
WFCL	-	Western Financial Corp
WHO	-	World Health Organization
WIFA	-	Women In Fertility Age

CHAPTER ONE

GENERAL INTRODUCTION

1.1 INTRODUCTION

The Local Government Act 936 and the National Development Plan Commission Act 480 mandates MMDAs to initiate and prepare Medium Term Development Plans (MTDPs) that reflect the needs and aspirations of the people within the framework of the National Development Policy Agenda and prepare quarterly and annual progress reports on the implementation of the MTDPs.

The 2020 Annual Progress Report of the Tano South Municipal Assembly is the third assessment of the progress of implementation of the government's current medium-term National Development Policy Framework – Agenda for jobs: Creating Prosperity and Equal Opportunity for All (2018 - 2021).

The report was prepared based on the assessment of the status of indicators and targets adopted for monitoring the progress of key policy and programme interventions within the year under review. It also documents key policy measures and strategies implemented during the year to bring about the expected change in indicators as well as highlights of critical development and poverty issues in the Municipality. A two-day performance review meeting was held to validate the report.

1.2 PURPOSE OF MONITORING AND EVALUATION FOR 2020 PLAN PERIOD

1. Provide management with information regarding policy, programme and project performance.
2. To determine strengths and weaknesses of an intervention, and therefore enable improved future planning, delivery of services and decision making.
3. Assist staff and other stakeholders to determine in a systematic and objective manner the relevance, effectiveness and efficiency of activities in light of specified objectives.
4. Monitor progress towards the attainment of development goals, objectives and targets of the MTDP
5. As a means of validating the results of initial assessments obtained from project monitoring activities.
6. To make recommendations for addressing shortcomings identified during the assessment of the performances.

1.3 SUMMARY OF ACHIEVEMENTS OF THE IMPLEMENTATION OF THE MTDP

Table 1.1: Proportion of MTDP implemented

Indicators	Baseline 2019	Target 2020	Actual 2020
Proportion of the annual action plans implemented by the end of the December	71.2%	80%	70.38
a. Percentage completed	39.7	30.5	33.33
b. Percentage of on-going interventions	31.0	60.9	36.18
c. Percentage of interventions abandoned	0.5	3.1	0.87
d. Percentage of interventions not implemented	28.8	25.0	29.62
e. Percentage of interventions implemented outside the Annual Action Plan	42.4	5.3	13.6
Proportion of the overall MTDP implemented	30.7%	70.1%	67.43

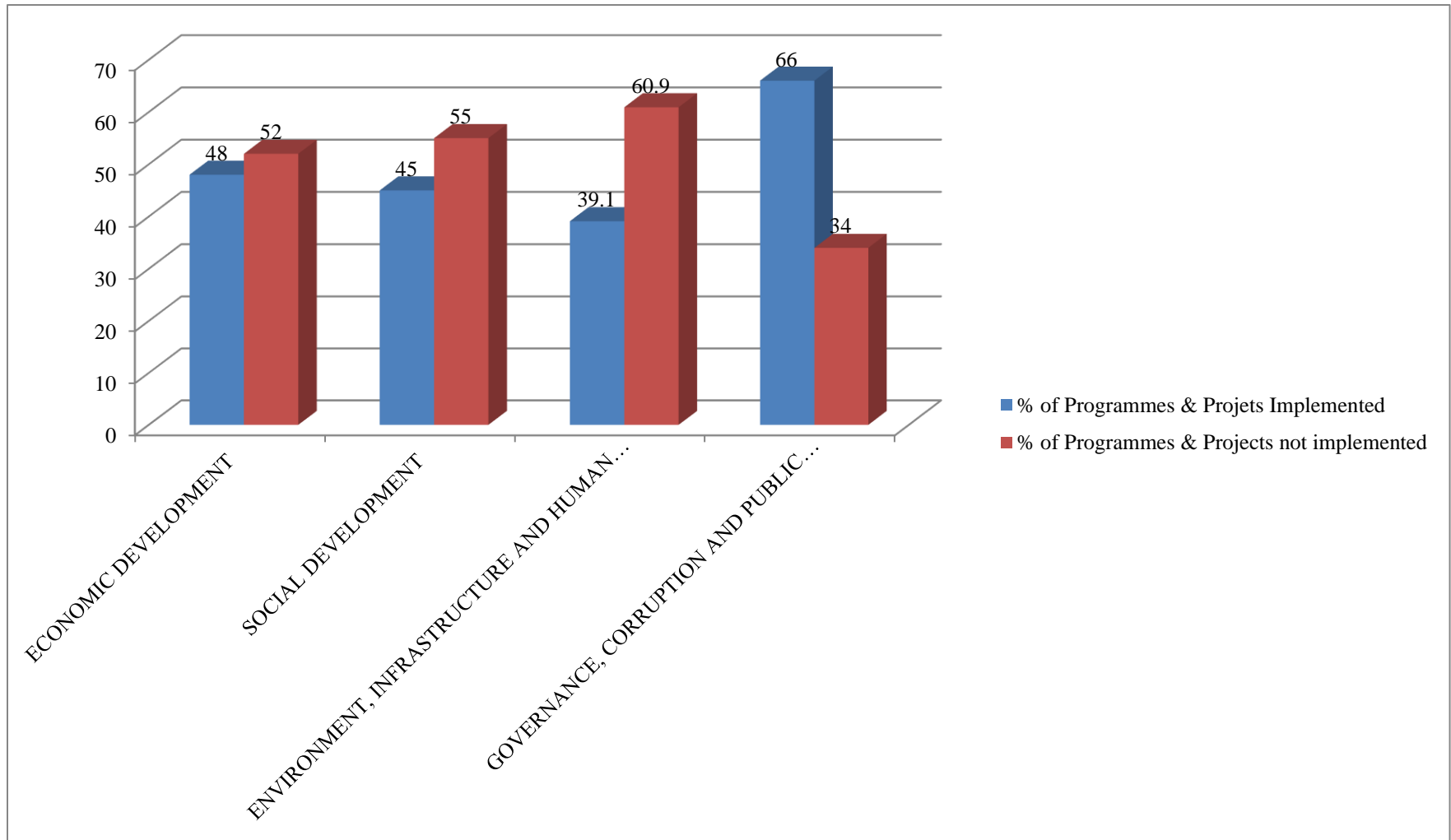
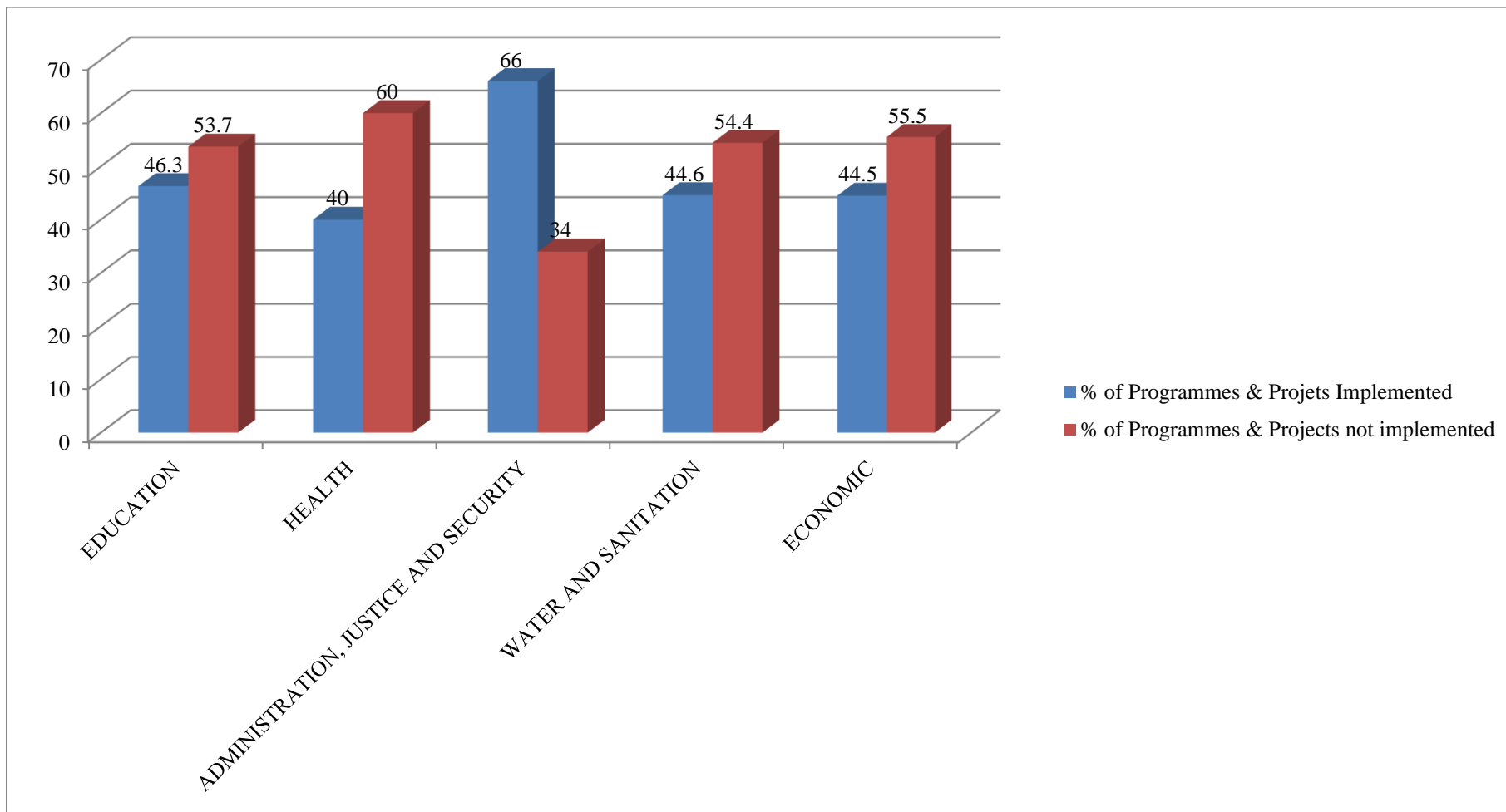


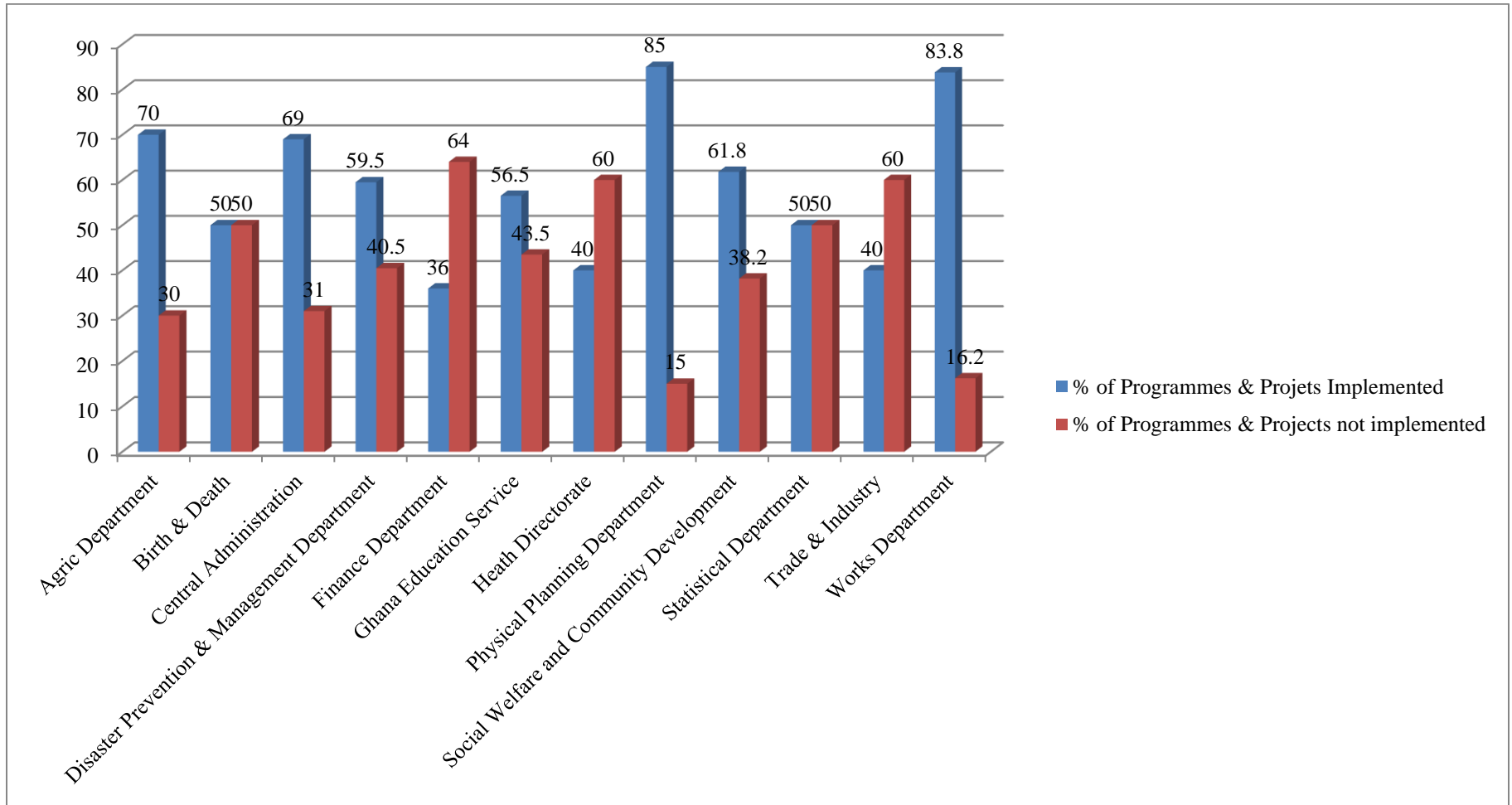
Figure 1.1: Implementation Status of AAP under Development Dimensions

Figure 1.2: Implementation Status of AAP under Development Sectors



Source: MPCU Secretariat, TSMA, 2020.

Figure 1.3: Implementation Status of AAP under Departments



1.4 Challenges encountered in the implementation of the MTDP including M&E challenges

Key challenges encountered during the implementation of the MTDP are highlighted below;

- Impact of COVID-19 pandemic on socio-economic activities.
- Inadequate and excessive delays in the release of funds from government, development partners and donors for project implementation (e.g. DACF, DACF-RFG, World Bank: GPSNP)
- Inadequate IGF mobilization to support implementation of AAP/MTDP.
- Implementing unplanned/unapproved programmes, projects and activities that are not contingencies.
- Weak sub-structures which serve as supporting structures to the Assembly system.
- Low prioritization of MPCU functions especially planning, budgeting, monitoring and evaluation.
- Low capacity and of key personnel (MPCU members and other Head of Departments) in planning, budgeting M&E and reporting.
- Low motivation of MPCU members and other Head of Departments/Units to perform their functions

1.5 Processes Involved

The Municipal Planning Coordinating Unit Secretariat held a refresher orientation for all heads of decentralized and non-decentralized departments and other relevant stakeholders on the new core performance indicators for reporting on the implementation of the 2018-2021 MTDP. Participants were also taken through the format and templates for reporting on quarterly and annual progress of implementation of plans.

Circulars were sent from the MPCU Secretariat soliciting inputs from various stakeholders including departments, agencies, NGOs and CSOs operating in the Municipality in respect of activity, quarterly and annual reporting on their planned programmes, projects and activities for the year 2020.

The MPCU also carried out quarterly monitoring and evaluation of some physical development projects as and when possible. The Project Specific Monitoring Team also embarked on on-the-spot monitoring visits to project sites to assess the progress of work as well as other project management issues.

Both primary and secondary data obtained from all these sources were collated, inputted analysed and interpreted by the MPCU Secretariat. The outcome of these processes was a Draft Annual Progress Report of the Tano South Municipal Assembly.

A two-day review meeting was organized at the Conference Hall of the Tano South Municipal Assembly involving all relevant stakeholders. All heads of departments and agencies took turns to present their portions of the draft report. The presentations were followed by discussions and validation of the report.

The MPCU Secretariat incorporated the inputs from the review meeting for a final validation of the 2020 Annual Progress Report by MPCU Members.

Some challenges encountered by the MPCU Secretariat during the Annual Progress Report preparation included: Inadequate funds and logistics for effective M&E activities and meetings, late submissions of quarterly and annual reports by departments, non-conformance to prescribed reporting format as well non-reporting on some core performance indicators.

CHAPTER TWO

MONITORING AND EVALUATION ACTIVITIES REPORT

2.1 Introduction

Chapter two of the report details the status of programmes/projects carried out in 2020, revenue sources, revenue targets, actual revenue received as well as disbursement of received revenue of the Municipality. Critical development and poverty issues identified in 2020 are also reported on.

2.2 Programmes/Project Status for the 2020

The list of development projects/programmes as at December, 2020 is presented in Annex 2A & 2B. The programmes, projects and activities are at various levels of implementation. Though the 2020 Composite Annual Action Plan (CAAP) contained 342 programmes, projects and activities, 375 programmes, projects and activities have been reported on. This is because 54 programmes, projects and activities implemented and reported on were outside the approved Revised 2020 Composite Annual Action Plan. This gives a percentage of 13.6% of the 2020 CAAP. With respect to the programmes, projects and activities reported in the 2020 Annual Progress Report, only 70.38% was implemented.

Out of the 342 programmes, projects and activities contained in the 2020 CAAP, 240 of them (representing 70.38%) were implemented and at various status of implementation, with 101 of them (representing 29.61%) yet to start. Of the implemented programmes, projects and activities for 2020, only 33.33% was completed, 36.18% on-going, while 0.87% was abandoned. Of the 427 total numbers of programmes, projects and activities contained in the 2018-2021 MTDP, 120 of them contained in the 2020 CAAP were implemented. This gives the proportion of overall 2018-2021 MTDP implemented as 67.43% at the end of 2020. Although the achievement of 67.43% fell short of the 2020 target of 70.1%, it shows a significant improvement in the MTDP implementation as compared to the base year of 2019.

Table 2.1: PROJECT REGISTER, 2020

Project Description	Development Dimension of Policy Framework	Location	Contractor/ Consultant	Contract Sum (GHc)	Source of Funding	Date of Award	Date Started	Expected Date of Completion	Expenditure to Date (GHc)	Out Standing Balance (GHc)	Implementation Status (%)	Remarks
1.Rehabilitation of Official Bungalows	Create Opportunities for All	Bechem	M/S. Addai Munumkum Ent.	35,454.91	DACF	10/21/2010	11/4/2010	3/21/2011	29,000.00	6,454.91	100%	Substantially Completed and in use
2. Construction of 1No. 2-Unit Classroom Block with Ancillary Facilities (Pre School).		Ninkyin nkyi	M/S. Metropoli Tan Property Holding Ltd.	59,075.25	DACF	3/21/2010	11/4/2010	3/21/2011	37,802.52	21,272.73	100%	Substantially Completed and in use
3.Refurbishment of District Assembly Offices		Bechem	M/S. Efrimana Ent.	43,143.95	DACF	10/21/2010	11/4/2010	21/03/2011	31,046.67	12,097.28	90%	Finishing (Standstill)
4.Construciton of Fence Wall & Inner Perimeter at Stadium.		Bechem	M/S. Newel System ltd	198,083.00	DACF	7/26/2011	8/9/2011	1/30/2012	66,030.08	132,052.92	85%	(Standstill) Consultant written to terminate work
5. Construction of Dressing Room and VIP Stand at Bechem Mini Sports Stadium		Bechem	M/S. Dalsam K. Ent	197,910.20	DACF	7/26/2011	09/08/2011	1/30/2012	100,619.75	97,290.45	60%	(Standstill) Consultant written to terminate work

6. Construction of 10 Seater Water Closet Toilet, Sewage Facilities, Water & Power Supply at Mini Sports Stadium	Create Opportunities for All	Bechem	M/S. Dukuly Ent	167,113.17	DACF	7/26/2011	8/9/2011	1/30/2012	20,000.00	147,113.17	35%	Abandoned
7. Rehabilitation of Old Treasury Block	Create Opportunities for All	Bechem	M/S. EFRIMANA ENT.	14,819.45	DACF	12/11/2013	24/12/2013	3/11/2014	10,362.48	4,456.97	100%	Substantially Completed and in use
8. Construction of 1 No. 2 - Storey, Administration Block and ICT Center for Presby S H S		Techimantia		-		GETFUN D		-	-	-	-	-
9. Construction of 3 Unit Classroom Block with Ancillary Facilities		Adaa	M/S. Babaco Ventures Ltd.	174,843.78	DACF	17/03/2015	31/03/2015	30/10/2015	148,579.76	26,264.02	100%	Substantially Completed and in use
10. Completion of 1 No. 6- Unit Bedroom Teachers Quarters		Akobro	M/S. Jamboa Ent	69,994.54	DACF	25/08/16	09/09/2016	25/10/16	10,498.50	59,496.04	48%	Abandoned

11. Construction of 1No. 2-storey 8 flat staff quarters for St. Joseph , College of Educ. Bechem		Bechem			GETFUN D	-	-	-	-	-	-	Abandoned
12. Construction of 1No. 2-storey building Girls Dormitory for St. Joseph's College of Education, Bechem		Bechem			GETFUN D	-	-	-	-	-	-	Abandoned
13. Construction of 1No. Storey building Administration Block and ancillaries for St. Joseph College of Educ., Bechem		Bechem			GETFUN D	-	-	-	-	-	-	Abandoned
14. Construction of OPD Admin. Block for Bechem Government Hospitals		Bechem			GOG	-	-	-	-	-	-	Abandoned
15. Renovation and Conversion of Old Classroom block into Hostel		Derma S H S	Kwabranee Ent.	139,972.56	DACF	4/10/2017	24/04/2017	13/12/2017	98,598.60	41,373.96	85%	Abandoned

16. Completion of 1No.3uint Classroom Blocks	Techimantia Community JHS	Kwabranee Ent	90,178.90	DACF	4/10/2017	24/04/2017	13/12/2017	62,373.41	27,805.49	86%	Abandoned
17. Completion of 1No. CHPS Compound	Dwomo	D.D. Caravan Vent	89,764.08	DACF	4/10/2017	4/24/2017	12/13/2017	80,736.30	9,027.78	100%	Substantially Completed and in use
18. Construction of 20-Seater Aqua Privy toilet	Derma S H S	Jago Apex Com. Ltd	160,965.31	MPCF	4/10/2017	4/24/2017	13/12/2017	131,352.30	29,613.01	100%	Substantially Completed and in use
19. Construction of 1 No. 3-Unit Class Room Block with Ancillary Facilities	Asuboi	Samotrust Co. Ltd	249,774.49	DACF	8/6/2018	8/20/2018	12/24/2018	215,658.95	34,115.54	100%	Substantially Completed and in use
20. Completion of 1No. 2-Unit Class Room Block	Asikasu	Nyajaag Enterprise	135,532.68	DACF	7/17/2020	8/18/2020	11/18/2020	33,148.80	102,383.88	27%	On- Going
21. Renovation of Municipal Chief Executive Bungalow, Phase 2	Bechem	Samotrust Co. Ltd	59,304.45	DACF	5/18/2018	6/2/2018	7/27/2018	45,257.30	14,047.15	100%	Substantially Completed and in use
22. Construction of Female and Children Ward	Derma Health Centre	Kenn's O B Const. Ltd	199,996.19	MPCF	8/6/2018	8/20/2018	12/24/2018	118,326.78	81,669.41	53%	On- Going

23. Const. of 6-Unit Classroom Block with Ancillary Facilities	Breme	Joekona Co Ltd	449,951.80	GETFUN D	8/9/2019	8/23/2019	1/23/2020	-	-	100%	Substantially Completed and in use
24. Const. of 6-Seater W/C Toilet	Breme	Espork Enterprise	84,996.40	GETFUN D	8/9/2019	8/23/2019	1/23/2020	-	-	100%	Substantially Completed and in use
25. Const. of 6-Unit Classroom Block with Ancillary Facilities	Techimantia	RIF Connac Ltd	449,991.30	GETFUN D	8/9/2019	8/23/2019	1/23/2020	-	-	90%	Finishes
26. Const. of 6-Seater W/C Toilet	Techimantia	RIF Connac Ltd	84,995.50	GETFUN D	8/9/2019	8/23/2019	1/23/2020	-	-	90%	Finishes
27. Const. of 6-Unit Classroom Block with Ancillary Facilities	Nyambye	Cimatron Co Ltd	449,994.50	GETFUN D	8/9/2019	8/23/2019	1/23/2020	-	-	80%	Finishes
28. Const. of 6-Seater W/C Toilet	Nyambye	Cimatron Co Ltd	84,992.00	GETFUN D	8/9/2019	8/23/2019	1/23/2020	-	-	80%	Finishes
29. Const. of 3-Unit Classroom Block with Ancillary Facilities	Derma	Kenn's O B Const. Ltd	274,993.38	GETFUN D	8/9/2019	8/23/2019	1/23/2020	-	-	100%	Substantially Completed and in use
30. Completion of 1No. 16-Seater Aqua	Kwasu	Megillah Concepts	69,488.00	D D F	7/5/2019	7/18/2019	10/7/2019	68,795.00	-	100%	Completed and in use

Privy Toilet												
31. Completion of 1 No Detached Staff Quarters	Bechem	Megillah Concepts	106,666.10	D D F	7/5/2019	7/18/2019	10/7/2019	105,610.00	-	100%	Completed and in use	
32. Completion and Furnishing of 1No. CHPS Compound with Nurses Quarters	Breme	V O B Coppers Co Ltd	184,788.57	D D F	7/5/2019	7/18/2019	10/7/2019	182,366.40	-	100%	Completed and in use	
33. Completion and Furnishing of 1No. CHPS Compound and 2-Seater W/C Toilet	Mansin	V O B Coppers Co Ltd	161,609.09	D D F	7/5/2019	7/18/2019	10/7/2019	160,008.60	-	100%	Completed and in use	
34. Completion of 1 No. 6-Unit Classroom Block for Anglican School	Bechem	Raymag Standards Ltd	130,130.42	D D F	7/5/2019	7/18/2019	10/7/2019	128,342.00	-	100%	Completed and in use	
35. Const. of 6-Unit Classroom Block with Ancillary Facilities	Derma S D A			IPEP	-	-	-	-	-		Roofing Level	

36. Const. of 6-Unit Classroom Block with Ancillary Facilities		Derma SHS			GH Gas	-	-	-	-	-		Roofing Level
37. Completion of 1No. Police Station		Techmantia	Stako Co. Ltd	288,476.40	DACF	4/24/2020	5/8/2020	9/10/2020	138,218.40	150,258.00	80%	Finishes
38. Construction of 1No. Police Command ar Quarter		Techmantia			IPEP	-	-	-	-	-	-	Roofing Level
39. Construction of Fence Wall and Security Post for School for Deaf		Bechem	RIF- Connac Ltd		GETFUN D	-	-	-	-	-	-	Finishes
40. Completion of 1No. Dormitory for Presec		Bechem	Joekona Co Ltd		GETFUN D	-	-	-	-	-	-	Finishes
41. Construction of Office Complex for Regional Education Directorate		Bechem			GETFUN D	-	-	-	-	-	-	Finishes
42. Construction of Staff Quarters for Regional Education Director		Bechem			GETFUN D	-	-	-	-	-	-	Finishes

43. Construction of 1No. 12-Unit Classroom Block for Presec		Bechem			GETFUND	-	-	-	-	-	-	Erecting of first floor Column
44. Construction of 1No. 12-Unit Classroom Block for Presec		Techimantia			GETFUND	-	-	-	-	-	-	Erecting of first floor Column
45. Const. of 6-Unit Classroom Block with Ancillary Facilities		Techimanta SHS	JoywayWadaada& Sons Com. Ltd	427,500.00	IPEP	-	-	-	-	-	-	Roofing Level
46. Completion of 1No. Dormitory for Samuel Out		Techimanta SHS			GETFUND	-	-	-	-	-	-	Finishes
47. Const. of 3-Unit Classroom Block with Ancillary Facilities		Techimantia Methodist Primary	Anaamy Com Ltd	237,500.00	IPEP	-	-	-	-	-	-	Superstructure Blockwork
48. Construction of Masters Bungalow		Derma SHS	JoywayWadaada& Sons Com. Ltd	237,500.00	IPEP	-	-	-	-	-	-	Roofing Level

49. Construction of 1No. 10-Seater W/C Toilet		Bechem Presec	JoywayWadaada& Sons Com. Ltd	171,000.00	IPEP	-	-	-	-	-	-	Roofing Level
50. Construction of Market		Old Brosankro	JoywayWadaada& Sons Com. Ltd	360,050.00	IPEP	-	-	-	-	-	-	Roofing Level
51. Construction of Fence Wall		Derma Health Centre			IPEP	-	-	-	-	-	-	Blockwork
52. Construction of Durbar ground		Derma	JoywayWadaada& Sons Com. Ltd	380,000.00	IPEP	-	-	-	-	-	-	Hardcore filling
53. Const. of 6-Unit Classroom Block with Ancillary Facilities		New Brosankro	JoywayWadaada& Sons Com. Ltd	449,991.30	GETFUND	8/9/2019	8/23/2019	1/23/2020	-	-	75%	Finishes
54. Const. of 6-Seater W/C Toilet		New Brosankro	JoywayWadaada& Sons Com. Ltd	176,989.00	GETFUND	8/20/2020	8/23/2019	1/23/2020	-	-	75%	Finishes
55. Const. of 6-Unit Classroom Block with Ancillary Facilities		Derma SDA	JoywayWadaada & Sons Com. Ltd	427,500.00	IPEP	-	-	-	-	-	-	Roofing Level
56. Construction of 1No. 10-Seater W/C		Derma			IPEP	-	-	-	-	-	-	Finishes

Toilet												
57. Construction of 1No. 10-Seater W/C Toilet		Techimantia			IPEP	-	-	-	-	-	-	Finishes
58. Construction of 2 - No. 1-Unit Nurses Quarters		Dwomo	V O B Coppers Co. Ltd	299,853.85	REG - DACF	8/4/2020	8/18/2020	1/23/2020	269,797.50	30,056.35	100%	Substantially Completed and in use
59. Const. of 6-Unit Classroom Block with Ancillary Facilities		Achiase	Samotrust Co. Ltd	450,000.00	GETFUN D	9/1/2020	8/23/2019	1/23/2020	-	-	-	Pre Contract Stage
60. Const. of 6-Seater W/C Toilet		Bechem school for Deaf	JoywayWadaada& Sons Com. Ltd	176,989.00	GETFUN D	8/20/2020	8/23/2019	1/23/2020	-	-	55%	Finishes
61. Const. of 3-Unit Classroom Block with Ancillary Facilities		Derma Methodist Primary	Kenn's O B Const. Ltd	274,993.38	IPEP	-	-	-	-	-	100%	Substantially Completed and in use
62. Const. of 3-Unit Classroom Block with Ancillary Facilities		Tweapease	Anaamy Com Ltd	237,500.00	IPEP	-	-	-	-	-	-	Roofing Level

63. Const. of 3-Unit Classroom Block with Ancillary Facilities		Biokrom	JoywayWadaada& Sons Com. Ltd	270,272.00	REG - DACF	-	-	-	-	270,272.00	25%	Substructure
64. Const. of 1No. 16-Seater KVIP Toilet		Mansin	Destex Enterprise	168,012.00	REG - DACF	-	-	-	-	168,012.00	20%	Substructure
65. Const. of 1No. 16-Seater KVIP Toilet		OnweNkwanta	Destex Enterprise	168,012.00	REG - DACF	-	-	-	-	168,012.00	20%	Substructure
66. Supply of Wooden Furniture (920 Dual Desks,20 Hexagonal Table and 160 mono Chairs)		Municipal Wide	VOB Coppers Co Ltd	221,200.00	REG - DACF	-	-	-	-	221,200.00	-	-
67. Small Town Water Project		Old Brosankro & New Brosankro			G O G	-	-	-	-	-	100%	Substantially Completed and in use
68. Drilling of 10No. Borehole within the Municipality		Municipality	RIF Connac Limited	195,658.15	DACF	6/6/2018	6/20/2018	10/8/2018	190,886.00	-	100%	Completed and in use
69. Construction of High Level Tank, Unrinal and Soakaway		Techimantia, Bechem,	G - Sag Enterprise	165,991.48	REG - DACF	7/27/2020	8/18/2020	9/30/2020	147,913.20	18,078.28	100%	Substantially Completed and in use

		Derma, Dwomo										
70. Drilling and Mechanization of 1No. Borehole for Government Hospital and Drilling of 4No. Hand Pump Bore Hole		Dwomo, Akobro, Kwakufe krom	Rif - Connac Com. Ltd	172,018.00	REG - DACF					156,018.00		
71. Rehabilitation of Small Earth Dam		Mansin	NurashEnt.	270,101.40	GPSNP	2/17/2020	4/20/2020	4/21/2022	30,539.33	239,562.07	54%	On- Going
72. Reshaping of 21.90KM Feeder Road		Akobro - Asuboi - Nyamebe ye, Ankaase - Ninkyini nkyi, Nsuta - Darso, Bechem - Breme								142,962.00		
73. Construction of Additional Drains		New Brosankr o- Old	Alaga Ltd	199,755.00	DACF	25/12/16	9/8/2018	12/24/2016	198,857.00	-	100%	Completed and in use

and Gravelling of 500M Feeder Roads		Brosankro										
74. Construction and Bitumem surfacing of Town Roads (10.5KM)		Bechem	Sames Com. Ltd		G O G	-	-	-	-	-	-	On- Going
75.Reconstruction of Bechem - Techimantia - Akomadan Highway Road (37KM)		Techimantia - Akomadan			G O G	-	-	-	-	-	-	Sword cutting
76. Upgrading of Asuoso - Derma - Techimantia Feeder Road (6.5KM)		Adaa - Derma	BoatwayCom.Ltd		Cccoa Bod	-	-	-	-	-	-	On- Going
77. Upgrading of Asuoso - Derma - Techimantia Feeder Road (6.5KM)		Derma - Nkwakyre	Anaamy Com. Ltd		Cccoa Bod	-	-	-	-	-	-	On- Going
78. Upgrading of Asuoso - Derma -		Nkwakyre - Techimantia	O B J Engineering Ltd		Cccoa Bod	-	-	-	-	-	-	On- Going

Techimantia Feeder Road (6.5KM)												
79. Rehabilitation of Road		Woranponho Junction - Woranponho	Maasim Const. Wks Ltd	133,806.77	GPSNP	1/12/2020	4/20/2020	4/21/2022	-	133,806.77	34%	On- Going
80. Complete and furnish 1 No. CHPS Compound and 2-Seater W/C Toilet		mansin			Donors						0%	
81. Rehabilitate 1 No. CHPS Compound		Mawaninso			Donors						0%	
82. Construct and furnish 1 No. CHPS Compound and Nurses Quarters		Twepease			Donors						0%	
83. Construct and furnish 1 No. CHPS Compound and Nurses Quarters		Toronto/Burkina			Donors						0%	
84. Rehabilitate Magistrate Court		Bechem			DACF						0%	
85. Construct 3 No. public toilets		Bechem (PRESEC, Adum Unit I) Techimantia (Samuel			DACF						0%	

		Otoo SHS)										
86. Construction of 2No. 10-Seater KVIP Toilet for Roman Catholic(R/C) Cluster of Schools and Presbyterian Primary School		Bechem			IGF						0%	
87. Maintain/spot improve feeder roads		Bechem Techimantia Ohianim guase, Dwomo, Mansin and other areas			GOG						0%	
88. Rehabilitate / Spot improve 2.4 km Feeder Road		Krontihekrom			GOG						0%	
89. Construct 15 No. culverts and drains		Municipal wide			GOG						0%	
90. Reshape 150 km feeder roads		Municipal wide			GOG						0%	
91. Complete Renovation of MCE's Bungalow Phase III		Bechem			DACF						0%	
92. Renovate MA staff bungalows		Bechem			GOG						0%	
93. Construct 1 No. 3-unit classroom block with library,		Bechem			GOG						0%	

computer laboratory and ancillary facilities for technical apprentices training												
94. Rehabilitate Brosankro L/A primary School		New Brosankro			Donors						0%	
95. Construct and Furnish 1No. 3 Unit Classroom Block with 1No. 2 Unit Urinary and 1No. 6-Unit KVIP toilet		Tweapease			Donors						0%	
96. Construct and Furnish 1No. 3 Unit Classroom Block with 1No. 2 Unit Urinary and 1No. 6-Unit KVIP toilet		Adomakokrom			Donors						0%	
97. Construct 1No. Earth Dugout		Techimantia		245,000.00	Donors						0%	
98. Construct 1No. Earth Dugout		Derma		245,000.00	Donors						0%	
99. Renovate and furnish 2 No. Town council office blocks		Derma Techimantia		30,000	DACF						0%	
100. Maintain office building		Bechem		10,000.00	DACF						0%	
101. Const. of 6-Seater W/C Toilet		Bechem R / C	JoywayWadaada&	176,989.00	GETFUN D	8/20/2020	8/23/2019	1/23/2020	-	-	55%	Finishes

			Sons Com. Ltd									
--	--	--	------------------	--	--	--	--	--	--	--	--	--

Source: MPCU Secretariat-TSMA, 2020

Table 2.2: PROGRAMME REGISTER, 2020

No.	Activity	Location	Budget (GhC)		Source of Funding	Status of Implementation	Gender Reporting Number, Sex and Age Disaggregation of beneficiaries	Remarks
			Plan	Actual				
1.	Conduct skill development training programmes for 80 youth	Municipal Wide	128,000.00		GOG	100%	-	
2.	Facilitate the establishment of new industries	Municipal Wide	10,000.00		GOG	30%	-	
3.	Facilitate the creation of 10 new jobs	Municipal Wide	55,000.00		GOG	100%	Male: 2 Female: 8 Total: 10	
4.	Organise 4 No. financial training sessions for 75 MSEs	Bechem Dwomo	10,000		Donor	0%	-	
5.	Organise 4 No. marketing training sessions for 80 MSEs	Bechem Derma	10,000		Donor	0%	-	
6.	Organise 4 No. welding and fabrication training for 80 MSEs	Bechem Techimantia	5000		Donor	0%	-	
7.	Organize 4 No. carpentry and joining training for 60 MSEs	Bechem Dwomo	12,000		Donor	0%	-	
8.	Organize 4 No. soap making trainings for 75 MSEs	Bechem Mansin	12,000.00	1,800.00	Donor	100%	Male: 4 Female: 16 Total: 20	Good planning Commitment Adequate raw materials

9.	Conduct 1 No. business counselling for 60 MSEs	Municipal wide	2,000.00		Donor	0%	-	
10.	Organize 2 No. study tour for 80 MSEs	Municipal wide	14,000.00		Donor	100%	-	
11.	Support Nananom towards the acquisition of land for “One district One factory” (1D1F)	Selected community	15,000		GOG	0%	-	
12.	Sensitize 50 FBOs on Fall Army Worms	Kwame Nsia/ Kwabenateng	4,200.00		PPRSD	80%	Male -54 Female: 22 Total = 76	Farmers were trained on how to effectively manage fall army worm infestation under GIC Funding in Kwame Nsia and Kwabenateng
13.	Plant 1,000 No. trees to serve as windbreaks and also to prevent drought	Kwasu, Breme Subriso, Brosankro, Derma Ankaase	15,000	2,600.00	GOG	87%	Male; 80 Female:20 Total: 100	Engagement of the DVG
14.	Pay utility bills (water, electricity internet and communication) for Agric Dept.	Bechem	2,000		GOG	50%	-	
15.	Procure office stationeries for Agric Dept.	Bechem	1,200		MAG	100%	-	
16.	Purchase 10 No. additional protective clothing (green uniform, raincoat and wellington boots)	Bechem	3,000.00		Donor	0%	-	
17.	Maintain and Insure 10 No. motor bikes and 1 No. official Vehicle	Bechem	24,000.00		Donor/GOG	0%	-	
18.	Conduct quarterly monitoring and evaluation of all Government flagship programmes (PFJ, PERD, RFJ) and agricultural activities	Bechem, Techimantia and Derma zones	4,500		MAG	50%	Male: 7 Female: 4 Total: 12	On-going Provision of technical backstopping to farmers to improve their knowledge

19.	Conduct 3,328 No. field and home visit to 18,000 farmers and backstop them yearly per AEAs, NABCO staff and Technical backstopping by MAOs and MDA	Bechem, Techimantia and Derma zones	11,316.00	4,500.00	MAG /GOG	90%	Male: 12,762 Female: 5,734 Total: 18,496	On-going Provision of technical backstopping to farmers to improve their knowledge.
20.	Conduct monthly/quarterly Technical Review Meetings	Bechem	4,800.00	1,320.00	Donor	50%	Male: 18 Female: 4 Total: 22	On-going Technical staff briefed on new trends and on how to improve upon service delivery in their line of work
21.	Hold 4 No. Agric Dept. management meetings	Bechem	1,080.00		Donor	100%	Male: 36 Female: 0 Total: 36	Management members informed of new developments and deliberated on ways to achieve target for planned activities amid Covid -19 Pandemic.
22.	Collect and analyse data on livestock and poultry to prepare census report	Bechem, Techimantia and Derma zone	1,000.00		Donor	100%	Male: 115 Female: 39 Total: 154	Data of livestock was acquired from livestock farmers
23.	Hold 76 No. talk shows on Govt. flagship programmes	Bechem	3,000.00		Donor	100%	Male: 48 Female: 0 Total: 48	Education and information on new technologies and immerging issues affecting agriculture being disseminated through radio.
24.	Support 4 Enumerators and Supervisor to collect basic farm data, analysed and Documented	Bechem	1080.00		GOG	100%	Male: 8 Female: 2 Total: 10	On-going Yield studies for all listed crops has been complete with the exception of rice and maize whose harvest is yet to be ready.
25.	Prepare and submit monthly, quarterly, mid- year and annual reports	Bechem	800.00	800	IGF	100%	-	Implemented Stakeholders fully participated
26.	Collect weekly basic market data on commodity prices and movement from market outlet	Bechem	504.00		Donor	80%	Male: 18 Female: 134 Total: 152	Implemented

								Data on food market prices made available. Data collection was done in May due to covid-19 Pandemic
27.	Conduct Immunization exercise for 1,000 exotic and local poultry against Newcastle Disease	Bechem, Techimantia and Derma zone	1,200.00		Donor	100%	Male: 49 Female: 14 Total: 63	Vaccination was successfully done
28.	Support community self-help projects	Municipal Wide	153,730.89	2008.50	DACF	50%	-	
29.	Conduct Anti- Rabis vaccination for 200 dogs, 80 cats and other pets	Bechem, Techimantia and Derma zone	1,000.00		GOG	100%	Male: 96 Female: 14 Total: 120	Vaccination was successfully done
30.	Organise 1No. sensitization and training programme for 20 technical staff on indigenous Micro- Organism (IMO) technology	Bechem	950.00	950.00	Donor	100%	Male: 22 Female: 4 Total: 26	Technical staff were successfully trained on IMO technology
31.	Establish 3 demonstration fields on IMO technology	Bechem, Techimantia and Derma zone	7,500.00		Donor	30%		On-going One out of three demonstration has been done .
32.	Train 20 technical staff on supplementary feeding.	Bechem	1,500.00		Donor	0%	-	
33.	Conduct PPR Vaccination exercise and other Clinical Treatment for 10,000 Sheep and Goats	Bechem, Techimantia and Derma zone	1,000.00		Donor	30%	Male: 194 Female: 36 Total: 230	On-going Vaccination was successfully done
34.	Organise 3 Zonal level RELC meeting and 1 Municipal Level Planning sessions for 180 participants	Bechem, Techimantia and Derma zone	9,000.00		Donor	0%	-	
35.	Establish 2 No. Field Demonstrations on pepper and tomato production in 2 communities	Bechem, Techimantia and Derma zone	5,000.00		MAG	50%	Male: 69 Female: 17 Total: 86	On-going Two out of the four demonstrations are still on going.

								The additional two have been rescheduled to next quarter.
36.	Establish 6 Field Demonstrations on Rice in 6 communities	Bechem, Techimantia and Derma zone	15,729.00	5,243.00	MAG	30%	Male: 29 Female: 11 Total: 40	On-going Two demonstration fields were monitored and maintained.
37.	Establish 6 Field Demonstrations on Maize in 6 communities	Bechem, Techimantia and Derma zone	15,729.00	-	GIZ	0%	Male: 35 Female: 12 Total: 47	On-going Two demonstration fields were monitored and maintained.
38.	Train 700 Cereal (Rice & Maize) Farmers in GAPS	Bechem, Techimantia and Derma zone	8,000.00		MAG	45%		On-going Various stakeholders were involved
39.	Organize 1 Field Study Tour for 25 Lead farmers	Amanchiamu	6,000.00		Donor	0%	-	
40.	Train 30 registered agro- input dealers on modalities on PFJ	Bechem, Techimantia and Derma zone	2,000.00		MAG/GOG	100%	Male: 23 Female: 3 Total: 26	Agro- input dealers receive training on PFJ modalities
41.	Train 90 women farmers in alternative livelihoods in soya byte making, snail rearing and 'Alata' shower gel	Bechem, Techimantia and Derma zone	4,500.00		Donor	50%		On-going
42.	Train 25 Women CBOs members and 25 Women FBOs members on Value Addition, processing and packaging technologies	Bechem, Techimantia and Derma zone	500.00	500.00	Donor	50%	Male: 3 Female: 27 Total: 30	
43.	Train 800 farmers on post-harvest management practices in grains, vegetables and root crop production along their value chain	Bechem, Techimantia and Derma zone	6,000.00	6,000.00	MAG	100%	Male: 73 Female: 40 Total: 113	Implemented Farmers were successfully trained in post-harvest management
44.	Train 40 women in food safety	Bechem, Techimantia and Derma zone	1,000.00		Donor	100%	Male: 29 Female: 3 Total: 32	

								Technical staff members receive training on food safety and hygiene to enable them educate farmers on the concept and importance of food safety and hygiene.
45.	Organise 120 plant health Clinics in 6 operational Areas	Bechem, Techimantia and Derma zone	2,000.00		Donor	0%	-	Funds are not available to carry out activity.
46.	Support the use of smokeless stove	Bechem, Techimantia and Derma zone	1,000.00		Donor	0%	-	
47.	Disseminate Climate SMART activities to 1,000 farmers	Municipal wide	1,600.00		Donor	0%	-	
48.	Organise 4 trainings in 4 communities on Soil Acidity Management	Municipal wide	3,000.00		Donor	0%	-	
49.	Organize 4 No. trainings on Bio char preparation	Municipal wide	4,000.00		Donor	0%	-	
50.	Organise Municipal Farmers' Day Celebration	Selected Community	110,000		GOG(DACF)	100%	-	
51.	Conduct 17 No. training sessions for 45 No. technical staff of MOFA	Municipal wide	16,000.00		GOG	0%	-	
52.	Conduct 2 No. workshops on pest and disease management in grains/legume for 20 MOFA staff	Bechem	1,500.00		GOG	0%	-	
53.	Prepare and Submit 12 No. Financial Statements and 1 No. Annual Account	Bechem	12,000	1,100	IGF	46.2%	-	6 Financial accounts have been submitted
54.	Organize 1 No. training for 40 revenue collectors	Bechem	12,000		DACF	0%	-	
55.	Procure 1,240 No. value books	Bechem	7,500.00		IGF	100%	-	

56.	Organize 4 No. Pay Your Levy and Taxes campaigns	Municipal wide	4,500		IGF	0%	-	
57.	Procure office equipment and stationeries for Finance Department	Bechem	13,500	13,500	DACF	100%	-	
58.	Organize 4 No. staff capacity building programmes for Finance Department	Bechem	6,500		DACF	0%	-	
59.	Conduct monthly supervision of revenue collection points	Municipal Wide	20,000		DACF(IGF)	50%	-	
60.	Cede revenue heads to T/A councils	Bechem, Brosankro, Dwomo/Mansin, -Subrisu, Techimantia, Derma, Ankaase	7,000		IGF	0%	-	
61.	Conduct 2 No. procurement audit on works, goods and services	Bechem	1,200		GOG	100%	Male: 2 Female: 3 Total: 5	Timely realize of funds
62.	Conduct 4 No. Cash management audit on DACF/IGF/DDF and other accounts	Bechem	800.00		GOG	100%	-	
63.	Carry out 1 No. audit of Area Council/revenue stations' activities	Bechem	1500		GOG	100%	Male:1 Female: 1 Total: 2	Town Councils and Management of the Assembly.
64.	Hold 4 No. Audit Committee Meetings	Bechem	12,000	3,900	GOG	25%	Male: 10 Female: 0 Total: 10	On-going Due to Government directives on COVID-19 for not organizing meetings and conferences.
65.	Conduct 5 No. fire safety inspections assess compliance of safety in selected communities	Bechem, Derma Techimantia,	2,550.00	500.00	IGF	55%	No. 3	On-going Halfway participation due to inadequate funds

66.	Conduct 1 No. training session for 5 No. Gas stations and 10 No. filling stations	Selected communities	1,500.00		GOG	0%	-	
67.	Conduct 5 No. firefighting and rescue services	Techimantia Derma Dwomo Bechem Brosankro	9,800.00	3,600.00	GOG	70%	Number: (17) Sex: (11 males and 6 females)	Half –way participation due to insignificant fund to fuel the tender for the operational activities
68.	Conduct 10 No. fire drills and practical firemanship	Bechem	1,500.00	100.00	GOG	30%	Males: 20 Females: 7 Total: 27	On-going Half –way participation due To inadequate fuel been supplied to the tender for the operation
69.	Conduct 1 No. in-service training and simulation exercise	Bechem-junction	8,350.00		GOG	0%	-	
70.	Organise 2 No trainings for fire volunteers and patrols	Municipal wide	4,150.00		GOG	20%	Total: 670	On-going -Half way participations due To inadequate funds.
71.	Conduct launching of 2020-2021 Anti-bush fire campaign	Bechem	11,230.00		GOG	0%	-	

72.	Organise 3 No. radio education programme on fire safety and prevention	Bechem	1,200.00	700.00	GOG	55%	Males: Females: Total: 40	Half way participation due to inadequate funds
73.	Embark on 78 No. Anti –Bush fire education through community durbars, community information centres, radio programmes, etc.	Municipal Wide	8,000.00	6,000.00	DACF	75%	Male; 55 Female:23 Total: 78	Decreased in bush and domestic fire
74.	Identify 20 No. weak structures	Kwasu, Dwomo, Mansin, Ankaase, Breme, Derma and Brosankro	2,000.00	1,400.00	DACF	70%	Male; 15 Female:5 Total: 20	Inadequate participation of the building owners
75.	Activate and train 40 No. District Voluntarily Groups (DVGs)	Municipal Wide	1,500.00	1000.00	DACF	67%	Male; 30 Female:10 Total: 40	Lack of motivation to DVG's
76.	Organise clean-up exercises (to desilt gutters and clear bushes)	Municipal Wide	2,500.00	1,500.00	DACF	60%	Male; 30 Female:20 Total: 50	Lack of tools and equipment
77.	Embark on 35 No. educational programmes on rainstorm flood prevention through community durbars, community information centres, radio programmes etc.	Municipal Wide	1,000.00	600.00	DACF	60%		-Stakeholders fully participated
78.	Procure 10 No. skip refuse containers	(Techimantia, Derma, Dwomo, Brosankro, Bechem) Zones	20,000		DACF	0%	-	
79.	Evacuate 4 No. dump sites	Bechem Derma Techimantia Brosankro	200,000	48,312	DACF	50%	-	
80.	Push and level 1 No Final Disposal site	Bechem	30,000		DACF	100%	-	

81.	Procure safety and sanitation items (wellington boots, rain coats, hand gloves, nose masks) for MA	Bechem	10,500	2,000	IGF	19%	-	
82.	Sensitise 15 No. communities on good hygiene	Onwe Nkwanta, Old & new Brosankro, Bechem, Techimantia, Derma, Ankaase, Adaa, Subriso, Breme, Mansin, Kwasu, Dwomo, Ohianinguase, Biokrom	25,000		IGF	0%	-	
83.	Organize 14 No. health promotion campaigns and screening for 1,500 food vendors	Techimantia, Derma, Derma Nkwaakyire, Kofikrom, Ankaase, Dwomo, Old & New Brosankro, Bechem, Breme, Mansin Kwasu, Ohianinguase	1,500		DACF	0%	-	
84.	Procure sanitation items (wheel barrow, cutlasses, shovels, rakes, pick axe, spraying machine)	Bechem	15,000		DACF	0%	-	
85.	Undertake 12 No. fumigation and sanitation activities	(Techimantia, Derma, Dwomo, Brosankro, Bechem) Zones	215,600.00	1000	DACF	8.3%	-	
86.	Support persons living with HIV (PLHV/AIDS) and children in critical needs	Municipal wide	2,000.00		GOG	50%	Male - 6 Female -5 Total = 11	
87.	Hold quarterly advocacy meetings on HIV/AIDS with stakeholders	Municipal wide	1,800.00		GOG	0%	-	

88.	Organise “Know Your HIV Status” campaign and 50 radio talk shows on HIV/AIDS	Selected Communities	5,000.00		GOG	100%	-	
89.	Organise quarterly performance review of HIV/AIDS/malaria activities by implementing partners	Municipal wide	2,500.00		GOG	50%	-	On-going
90.	Organise quarterly Municipality Aids Committee meeting	Bechem	4,000.00		GOG	0%	-	
91.	Submit quarterly reports on HIV/AIDS and Malaria	Municipal wide	1,800.00		GOG	100%	-	
92.	Organize 10 community durbars for HIV/AIDS sensitization and screening	Selected communities	10,000.00		GOG	0%	-	
93.	Hold quarterly epidemic committee meeting	Bechem	5,000.00		GOG	0%	-	
94.	Hold 3 No. staff/community volunteers training programme	Bechem	5,000.00		GOG	0%	-	
95.	Investigate 31 No. reported cases	Municipal wide	3,000.00		GOG	0%	-	
96.	Procure 12 No. health immunization logistics	Bechem	4,000.00		GOG	40%	-	
97.	Organize 3 No. staff training programme on immunization	Bechem	3,000.00		GOG	60%	-	
98.	Cold chain maintenance in 4 health facilities	Selected communities	2,000.00		GOG	0%	-	
99.	Organize 10.No. sensitizations on health issues	Selected communities	1,500.00		GOG	70%	-	
100	Carry out monitoring, evaluation and reporting on health issues	Municipal Wide	6,597.66		DACF	30%	-	
101	Support quarterly monitoring and supervision in 4 communities	Bechem, Derma, Techimantia, Brosankro	5,000.00		GOG	0%	-	
102	Pay for key messages on health issues	Health centers	3,000.00		GOG	0%	-	
103	Organize 4 No. data validation meeting	Bechem	1,500.00	-	GOG	50%	Total No. 175	

							Males: 103 Females: 72	
104	Lobby for logistics to undertake health education	Bechem	1,000.00		GOG	0%	-	
105	Preparation of monthly reports	Bechem	1,00.00		GOG	100%	-	
106	Organize 32 No. mass health education	Municipal wide	300.00		GOG	0%	-	
107	Organise 4 No. health education in schools	Selected communities	1,000.00		GOG	50%	-	
108	Organise 4 No. health education and 20 No. screening on Non-communicable diseases for communities	Municipal wide	5,000.00		GOG	0%	-	
109	Organise 30 No. health walks in schools	Municipal wide	-		-	0%	-	
110	Undertake iodized salt survey	Municipal wide	2,000.00		GOG	0%	-	
111	Organise 5 No. screening for underweight and wasting	Bechem	1,000.00		GOG	0%	-	
112	Organise 4 No. one-on-one counselling of mothers or caregivers on appropriate complimentary feeding	Bechem Techimantia Derma Brosankro	500.00		GOG	0%	-	
113	Organise 4 No. trainings on lactation management for staff	Bechem	5,000.00		GOG	0%	-	
114	Organise 1 No. orientation on nutrition and GIFTS report format for CHNS	Bechem	3,000.00		GOG	0%	-	
115	Organise quarterly financial monitoring and evaluations for the Health Department	Bechem	8000		Donors	0%	-	
116	Organise 4 No. training sessions for health department staff on procurement issues	Bechem	5,000		IGF	0%	-	
117	Organise 2 No. training sessions for health department staff on stores keeping	Bechem	2000		IGF	0%	-	

118	Organise 1 No. training session for health department staff on value books	Bechem	4,000		IGF	0%	-	
119	Organize 2 durbars and 4 radio programmes on malaria prevention	Selected Communities	2,000.00		GOG	50%	-	
120	Undertake quarterly infant births registration in 3 zones	Techimantia, Bechem, Derma (Zones)	1500		IGF	0%	-	
121	Organise sensitization meetings with 95 churches on birth and death registration and certification	Catholic Churches, Pentecostal Churches, Presbyterian, Methodist Churches & Charismatic Churches	1,000.00		IGF	0%	-	
122	Organize 51 No. media campaigns on birth and deaths registration and certification	Bechem and Techimantia zones	1,150.00		IGF	20%	-	
123	Organise 2 No. child health promotion week in 3 Communities	Bechem, Techimantia, Derma	1,300.00		GOG	0%	-	
124	Undertake 1,500 late mobile births registration	Bechem, Techimantia Derma zones	1200.00		GOG	50%	Male: 96 Female:93 Total= 189	On-going
125	Undertake 550 No. registration of deaths	Bechem, Techimantia Zones	100.00		GOG	30.4%	Male: 75 Female:77 Total= 152	On-going
126	Identify, assess and recommend 800 indigents, LEAP beneficiaries and PWDs for free NHIS cards	Municipal Wide	1,500.00		GOG	100%	Male-2,664 Female -3,744 Total: 6,408	- The cooperation of both LEAP beneficiaries and NHIA

127	Visit and Sensitize 25 No. LEAP communities on LEAP	Municipal Wide	2,000.00	779.20	GOG	100%	Male : 125 female :413 Total: 538	The release of mobilization fund and availability of officers.
128	Visit and Inspect 40 No. Day Care centres	Municipal Wide	1,500.00		GOG	10%	-	On-going Four (4) Early childhood Development Centres in Bechem were visited and inspected.
129	Register, monitor and collaborate with NGOs in 10 communities	Municipal Wide	500		IGF	100%	One (1) NGO registered (Nation Builders CM Network Ghana) One (1) NGO renewed its certificate (Save Our Environment Foundation)	Implemented Two (1)NGO submitted the necessary documents for registration and operation
130	Provide psycho-social services to 10 Juveniles	Municipal Wide	800	500	IGF	40%	Total = 4 Male – 2, Female -2	On-going Social Enquiry Report was submitted to court and juvenile convicted to correctional centres
131	Provide technical support to 20 No. family tribunals	Municipal Wide	500		IGF	40%	-	On-going Availability of panel members and provision of technical support from the family tribunal.
132	Train 10 women groups in income-generating activities	Municipal Wide	2,400.00		GOG	0%	-	Unsuccessful because of COVID-19
133	Hold mass meetings with 25 communities	Municipal Wide	2,000.00		GOG	100%	Females: 322 Males: 208 Total: 530	Implemented Community members sensitized on COVID-19 pandemic.

134	Sensitize 300 No. youths in 20 JHS and 15 Youth Groups on ARH	Municipal Wide	1,800		IGF	0%	-	Yet to start Unsuccessful because of COVID-19 Closure of schools
135	Organize 5 No. special trainings and community mobilisations	Selected communities	1,200		IGF	0%	-	
136	Train 20 managers of Day Care Centres	Municipal Wide	2,500.00		GOG	0%	-	Yet to start -Unsuccessful because of COVID-19
137	Provide support for 20 No. OVCs and abandoned children	Municipal Wide	2,000.00		GOG	100%	-	Implemented Two (2) abandoned children cases were recorded.
138	Sensitise 400 No. parents on Child Rights and Protection	Municipal Wide	700		IGF	100%	-	Implemented Radio sensitization organized on After 2 radio to educate the public on child rights and protection policies
139	Carry out quarterly general inspections and monitoring of Basic Schools	Municipal Wide	7,000.00		DACF	25%	-	On-going
140	Carry out Registration (Bio-data capturing) of students in 25 JHSs for 2020 BECE	Municipal Wide	8,000		DACF	100%	-	
141	Carry out School Selection and Placement of Candidates	Bechem	5,500.00		GOG	0%	-	
142	Organise and Monitor 2 No. Mock Examinations for JHS 3 students (2020 BECE School Candidates).	Municipal Wide	69,425.00		GOG	100%	-	I Stakeholders fully participated
143	Organise 1 No. Performance Appraisal Meeting for 20 Junior High Schools	Bechem	3,000		DACF	0%	-	
144	Organize 4 No. management meetings with Basic school heads	Municipal Wide	1,000.00		GOG	50%	72 Males, 18 Females	

								-Full Attendance and Contributions of the various Heads
145	Organise 2 No. Inter-Schools Sports Competition	10 Circuit centers	8,000.00		DACF	0%	-	
146	Undertake monitoring of 50 basic schools during re-open days	Municipal wide	2,000.00		GOG	0%	-	
147	Hold 4 No. Management meetings with 80 No. Basic School Heads	Bechem	1,000.00		GOG	0%	-	
148	Support quarterly monitoring of E-Learning activities in 80 No. schools by Mun. Director of Education	Municipal Wide	1,500.00		GOG	0%	-	
149	Hold 4 No. Management meetings with COHBS Leadership	Bechem	1,000.00		GOG	0%	-	
150	Organise Inter-school and inter-Circuit reading competition for Primary 2 Pupils	Municipal Wide	3,000.00		GOG	0%	-	
151	Conduct 1 No. interview for appointment of Basic school heads and Circuit Supervisors	Bechem	1,000.00		GOG	100%	-	Commitment of Officers
152	Organise My First Day at School	Municipal wide	15,000		GOG	0%	-	
153	Hold 4 No. Radio Talk Shows to educate the public on educational reforms, school selection, placement, policies and enrolment drive	Bechem	81,500.00	1500	DACF	2%	-	On-going Timely released of funds
154	Organize 2 No. Orientation and training for newly trained and recruited teachers and NABCO Trainees on new curriculum	Bechem	6,000.00		GOG	50%	20 Males, 15 Females Total: 35	
155	Supply of wooden furniture (920 Dual Desks for primary and JHS, 20 Hexagonal Tables and 160 Chairs for KG) for 25 Schools	Derma, Brosankro, Kwasu, Kwakukrom,	182,200		IGF	0%	-	

		Mansin, Techimantia, Breme, Ohianinguase, Subriso, AAdaa and Akobro						
156	Implement MP's programmes, projects and activities (Education, Health, Infrastructure, Zongo & Inner City, Social Welfare)	Municipal wide	386,000.00		DACF	0%	-	
157	Procure Safety equipment for project supervision and building inspection works	Bechem	5200.00		GOG	0%	-	
158	Procure small tools and Equipment for maintenance works	Bechem	4000.00	4,635.00	GOG	100%		
159	Procure 1 No. A3 Printer for the works dept.	Bechem	6000.00	1,380.00	GOG	100%	-	
160	Procure 1No. Photocopier Machine	Bechem	6000.00		GOG	0%	-	
161	Organize 1 capacity building training for Engineers and Foremen	Bechem	5000.00		GOG	0%	-	
162	Acquire 5 No. drawing for Assembly projects (buildings)	Bechem	6500.00	2,000.00	GOG	100%	-	
163	Routine Maintenance of works vehicle and 4 motorbikes	Bechem	10,000.00	4,200.00	GOG	100%	-	
164	Procure 1 No. motor bike for supervision	Bechem	5000.00		GOG	0%	-	
165	Organize 2 No. site meetings per quarter for on-going projects	Municipal wide	4,000	2,000.00	GOG	100%	-	
166	Organize 1 No. training session on good building practices for artisans in the Municipality	Bechem	1500.00		GOG	0%	-	
167	Organize 1 No. training session for artisans on promoting the use	Bechem	5000.00		GOG	0%	-	

	of improved local building materials in housing construction							
168	Take inventory of 20 No. schools that need facilities	Bechem Techimantia Dwomo Old & New Brosankro Derma	1,500.00	1,500.00	GOG	100%	Male - 2 Female -1 Total = 3	
169	Take inventory of 10 No. schools that need maintenance	Bechem Techimantia Dwomo Old & New Brosankro Derma	700.00	1,500.00	GOG	100%	Male - 2 Female -1 Total = 3	
170	Supervise the construction, renovation/rehabilitation of physical development projects	Municipal wide	86,100	3,723.00	GOG (IGF)	100%	Male - 15 Female - 4 Total =19	
171	Process 73 No. permit applications	Bechem	300	220.00	GOG	40%	Male - 32 Female -10 Total = 42	On-going 42 permits were processed as at the end of second quarter
172	Organize 2 No. capacity building workshops on water management system	Techimantia Bechem	8000		DPAT	0%	-	
173	Organize 2 No. Trainings for borehole mechanics on repairs	Bechem	5000		DPAT	0%	-	
174	Procure and install 100 No. LED street lights	Bechem Techimantia Derma	3500		DPAT	0%	-	
175	Routine maintenance of streetlights (Replacement of 30 burnt bulbs, 15 switches, 30 photocells 30 chokes)	Bechem Techimantia Derma	15,500.00	950.00	GOG	6%	-	On-going
176	Prepare Sector Layouts for 2 communities	Techimantia Dwomo	8,600.00		GOG	30%	-	On-going Bechem sector one completed

177	Produce base maps and local plans for fast growing areas	Derma Atoase Extension, Derma kubease extension, bechem sector 2	20,000		DACF	0%	-	
178	Retrace, Revise & Scan 2 worn-out local scheme	Brosankro Bechem	1,350.00		GOG	100%	-	Bechem sector one (1) completed Nkwantakesseso
179	Organize quarterly statutory Planning Committee meetings	Bechem	6,492.20		IGF	50%	Male: 12 Female: 0 Total: 12	On-going Key committee members participated
180	Organize quarterly Technical Sub-committee meeting	Bechem	6,492.20		IGF	50%	-	
181	Sensitize the public on Physical Planning related issues	Bechem, Derma Techimantia Brosankro, Dwomo	3,300.00		GOG	20%	The General public	5 No. Talk show and call in programmes made at After 2 Radio
182	Procure 3 ortho-photos and Aerial maps for Street Naming and Property Addressing	Derma, Dwomo Techimantia	9,700.00		GOG	0%	-	
183	Undertake Digital Property Addressing exercises in 51 communities	(Bechem, Derma and Techimantia) Zones	45,000.00	3,000.00	DACF	80%	-	On-going Stenciled 984 properties in Bechem
184	Hold 3 No. General Assembly meetings	Bechem	24,000.00	21,563.31	DACF	100%	Male: Female:	
185	Hold 3 No. Executive committee meetings	Bechem	9,000.00		IGF	100%	-	
186	Hold 12 No. Management meetings	Bechem	1,000.00		IGF	80%	-	
187	Hold 12 No. heads of departments meetings	Bechem	5,000.00		IGF	80%	-	
188	Hold 12 No MUSEC meeting	Bechem	10,000.00	973.00	IGF	100%	-	

189	Hold 3 No. sub-committee meetings	Bechem	12,000.00		IGF	100%	Male –25 Female- 7 Total = 32	
190	Hold 4 No. PRCC meetings	Bechem	3,000.00		IGF	0%	-	
191	Process 500 PWDs to access the disability fund	Municipal wide	142,699.00		GOG	100%	Total = 538	
192	Organize Independence Day Celebration	Municipal wide	40,000	25,000	DACF	100%	General public within all age brackets	Implemented Management commitment and involvement of all stakeholders
193	Organize 2 No. Municipal level and 7 No. Town/Area council level Hall meetings	Municipal wide	50,000.00		DACF	0%	-	Subriso zonal council Brosankro zonal council
194	Organize May Day Celebration	Municipal wide	4,000		GOG	0%	-	
195	Support Celebration of religious days (X'mas, Easter, Eidl fitr, Eid Adha, etc.)	Municipal wide	30,000	1,950.00	DACF	6.5%	-	
196	Organize 4 No. capacity building programmes for caterers and selected teachers of the beneficiary schools of the Ghana School Feeding programme	Bechem	4000		DACF	0%	-	
197	Service contingency activities	Bechem	100,000	15,070	IGF	15%	-	
198	Build capacity of Town/Area Councils	Municipal wide	10,000		DPAT	0%	-	
199	Hold 4 quarterly Area/Town council meetings	Municipal wide	10,000		DACF	0%	-	
200	Pay bank charges	Bechem	5,000.00	961.19	IGF (DACF)	19%	-	
201	Develop and deploy revenue database	Municipal wide	65,000		DACF	0%	-	
202	Insure Assembly office (building) on fire policy	Bechem	10,000		DACF	0%	-	
203	Cater for protocol services (hosting of official guests)	Bechem	17,000.00	7,732	DACF (IGF)	45%	-	

204	Pay NALAG dues/contributions	Bechem	5,000		DACF	0%	-	
205	Pay official electricity bills	Bechem	22,000.00	5,300	DACF	62%	-	
206	Pay official water bills	Bechem	5000		DACF	0%	-	
207	Procure internet booster for GIFMIS Operational activities	Bechem	10,000		DACF	100%	-	
208	Insure Assembly Vehicles	Bechem	10,000		DACF	0%	-	
209	Purchase fuel for official vehicles	Bechem	25,000.00	37,457.71	DACF	150%	-	
210	Cater for travel and transport expenses	Bechem	34,000.00		DACF	80%	-	
211	Support security operations (fuel and ration)	Municipal wide	10,000.00	700	DACF	30%	-	
212	Service telecommunication charges	Bechem	5,000.00	70	IGF	100%	-	
213	Service for postal charges	Bechem	1,000.00	471	IGF	47%	-	
214	Cede 50% of revenue to T/A Councils	Bechem	10,885.60		IGF	0%	-	
215	Organize 1 No. training program on Integration of the Fee-Fixing resolution	Bechem	2000.00		IGF	0%	-	
216	Prepare Annual Composite Budget and FFR for 2021	Bechem	12,000		DACF	100%	-	
217	Pay revenue commission for collectors	Bechem	10,885.60		IGF	50%	-	
218	Pay ex-gratia of Assembly members	Bechem	84,000.00		IGF	100%	-	
219	Provide for Donations during events	Bechem	10,000.00	10,390	IGF	80%	-	
220	Provide for accountable imprest	Bechem	24,000.00	4500	IGF	100%		
221	Hold Statutory meetings	Bechem	10,000.00		IGF	100%	-	

222	Pay extra duty allowance to junior staff (sanitation)	Bechem	5,000.00	720	IGF	14%	-	
223	Service monthly salaries of casual staff	Bechem	53,370.00	14,914.74	IGF	52%	-	
224	Pay 13% SSNIT contribution of casual staff service	Bechem	6,938.14	4,154.6	IGF	60%	-	
225	Presiding member's monthly allowances	Bechem	3,600.00	300	IGF	50%	-	
226	Pay transfer grants of officers	Bechem	20,000.00	18,000	IGF	100%	-	
227	Maintain office equipment and machines	Bechem	15,000.00		GOG	100%	-	
228	Furnish 3 No. MA staff bungalows with furniture	Bechem	13,000.00		DACF	0%	-	
229	Maintain office furniture and fittings	Bechem	25,000		DACF	0%	-	
230	Maintain official vehicles	Bechem	8000.00)	2,406.09	DACF	30%	-	
231	Organise 4 No. quarterly MPCU meetings	Bechem	5,000.00	1,742	DACF	50%	-	On-going Support from departmental Heads Timely release of funds
232	Update Municipal Socio-economic database	Bechem	10,000		DACF	0%	-	
233	Procure office stationery, logistics and equipment (A4 paper, cartridge, files, laptops, desktop computers photocopier, shelves, office desks and chairs, ceiling fans, carpet, curtains etc)	Bechem	34,615.38	5,761.25	DACF (DPAT)	14%	-	
234	Prepare and implement National Anti-Corruption Action Plan (NACAP)	Bechem	10,000		DACF	0%	-	
235	Prepare and implement National Popular Participation Strategic Plan	Bechem	20,000		DACF (IGF)	0%	-	

236	Prepare 2020 M & E plan	Bechem	2000		DACF	100%	-	
237	Prepare 2021 CAAP Plan (mid-year review meeting, coordination and collation of departmental plans, working sessions etc)	Bechem	15000		DACF	100%	Male – Female- Total =	
238	Conduct Mid Term review of 2018-2021 MTDP	Bechem	5,000	10,126	DACF	50%	-	On-going -Timely release of funds
239	Organise 4No. quarterly Review Meetings of 2020 AAP	Bechem	20,000		DACF	25%	-	
240	Organize 1No. Annual Performance Review meeting of 2019 CAAP	Bechem	10,000.00		GOG	100%	-	Collaboration and cooperation of Management, Heads of Department and Units, Assembly members, CSOs, etc.
241	Monitor, Evaluate and conduct Impact Assessment on development programmes, projects and activities as well as Government Flagship Prorammes and Projects in 2020 CAAP	Bechem	75,000	4,236.00	DACF (IGF)	100%		Implemented MPCU members fully participated
242	Develop and maintain website for the Municipal Assembly	Bechem	2,000		DACF	0%	-	
243	Provide and Install Wooden shelves at the Stores of the Assembly	Bechem	4000		GOG	0%	-	
244	Hold Four (4) Statutory Quarterly Entity Tender Committee (ETC) Meetings	Bechem	2500	600	IGF	100%	-	
245	Hold Two (2) Special Entity Tender Committee (ETC) Meetings	Bechem	3000	500	IGF	100%	-	
246	Hold Three (3) Tender Opening (TO) Meetings	Bechem	2500	800	IGF	100%	-	
247	Preparation of 2021 Annual Procurement Plan	Bechem	500		IGF	0%	-	

248	Hold Three (3) Tender Evaluation Panel (TEP) Meetings	Bechem	4,000	300	IGF	100%	-	
249	Support the Conduct of the 2020 Population and Housing Census	Municipal wide	76,000		GOG (IGF)	0%	-	
250	Undertake Data collection/ updating of localized indicators under SDGs	Bechem Techimantia	3,000.00	1,000	IGF	30%	-	On-going -On hold due to the outbreak of the Corona Virus
251	Update data on business and properties in the municipality	Bechem	20,000.00		DACF	0%	-	
252	Support capacity building of Assembly Staff (training programmes, seminars, workshops)	Municipal wide	69,615.38	36,840.00	DACF	100%	-	
253	Organize 1 No. training program on Pension Plan	Bechem	5000		DDF	0%	-	
254	Organize 1 No. training program on local government service protocols	Bechem	7,600	4,900.00	DACF	100%	Male: 27 Female: 13 Total: 40	Participant were duly present and fully participated
255	Organize 1 No. training program on Microsoft Office Suit for Secretaries	Bechem	200.00		DDF	0%		
256	Organize 1 No. training program on report writing	Bechem	5,600.00	5,200.00	DDF	100%	Male Female Total:	
257	Organize 1 No. Training program on Records management.	Bechem	5,600.00	5,600.00	DDF	100%	Male: 27 Female: 13 Total: 40	
258	Embark on public education campaigns on 2020 Population and Housing Census	Municipal wide	4500		DACF	0%	-	
259	Organize 1 No. Town Hall Meeting to sensitize and update public on gov't policies and programmes and development projects and programmes of the Municipality	Municipal wide	20,500		IGF	100%	Male –180 Female- 230 Total =410	

260	Organise Radio/Zoom monitoring of e-learning programme (USAID Partnership for Education: Learning Programme).	Bechem			USAID	100%	10 Officers	
261	Undertake Community sensitization on the reopening of SHS 3/Gold Track and JHS 3 Students	8 Communities			Assembly/PR ESEC	100%	280 Head masters, Church Leaders, Community Leaders	
262	Undertake School Fumigation Exercise	Municipal wide			Assembly	100%	43 schools	
263	Organise 1 No. Municipal Education Oversight Committee (MEOC) Meeting	Bechem			GOG	100%	Male: 4 Female: 11 Total: 15	Commitment of stakeholders
264	Organise 1 No. Orientation workshop on how to use google link for data collection for School heads and ICT teachers	Bechem			GOG	100%	Total : 116	
265	Facilitate official visit by Deputy minister of Local Government on Ghana Productive Safety Net Projects (GPSNP)	Woraponho Mansin Dwomo Derma Kwasu Tweapease				100%		
266	Carry out Ghana Productive Safety Net Projects activities (E-zwich Registration, payment of wages of beneficiaries, validation of Daily Attendance Sheets, monitoring activities	Woraponho Mansin Dwomo Derma Kwasu Tweapease				100%		Social accountability held on various beneficiaries communities and stakeholders fully participated Payment and validation were made
267	Validate salaries of staff for 12 months	Bechem	100.00	100.00	IGF	100%	106-male Female-69 Total = 179	All staff were validated
268	Supply of logistics for Covid-19	Bechem			DACF	100%		Logistics were supplied

269	CBPP vaccination for 300 cattle	Municipal wide			GOG	100%	male- 17 Female:0 Total = 17	300 cattle were vaccinated
270	Organize 1 no. Orientation on meeting on Progress Reporting Formats and Templates	Bechem			IGF	100%	Male - 16 Female – 2 Total =18	Stakeholders dully participated.
271	Procurement of rice for Islamic celebration	Bechem			IGF	100%		Procured rice.
272	Carry out monitoring/inspection in 105 No. sites	Municipal wide			IGF	100%		Monitoring and inspection were carried out. Stakeholders dully participated
273	Organise public health emergency committee meeting	Bechem			IGF	100%		
274	Constitution of task force to enforce social distancing	Bechem			IGF	100%		
275	Organise public sensitization and announcement on Covid-19	Municipal Wide			IGF	100%		
276	Monitoring of WAEC	Derma, Techimantia, Bechem			IGF	100%		
277	Basic School head teachers, assistant heads, School-Based SHEP, SPED, Guidance & Counseling and Girls Coordinator	Bechem			GOG	100%		
278	Undertake comprehensive Food Security and Vulnerability Assessment Survey (CFSVA)	Municipal Wide	5,000.00		GOG	100%		Not in Plan
279	Capacity Building workshop on sports disciplines	Sunyani				100%	2 Officers	Not in Plan
280	Monitoring of COVID-19 protocols in schools	Bechem				100%	2Officers	Not in Plan
281	Distribution of LLINs in schools	Sunyani				100%	1728 Participants	Not in Plan
282	Monitoring of Distribution of LLINs in schools	Sunyani				100%	12 officers	Not in Plan

283	Health Education on COVID-19 in schools	Bechem				100%	1728 Participants	Not in Plan
284	Capacity Building workshop on Cultural activities	Sunyani				100%	2Officers	Not in Plan
285	Training on GALOP,SISO and GES staff	Sunyani				100%	427 Officers	Not in Plan
286	Training on LLIN Distribution, SISO	Bechem				100%	9 Officers	Not in Plan
287	Prepare Bill of Quantities for 6No. Physical Projects	Bechem	700.00	-	GOG	100%	Male - 3 Female –1 Total = 4	Not in plan
288	Investigation and treatment of scabies outbreak	Asikasu				100%		Not in plan
289	Emergency preparedness towards election 2020	Municipal wide				100%		Not in plan
290	Training on COVID 19, GES, Office Staff	Bechem					41 Officers	Not in plan
291	Training of Private School Heads on COVID 19.	Bechem						Not in plan
292	Stakeholders meeting on National Reading Programme	Municipal Wide					164 Participants	Not in plan
293	Basic School headteachers, assistant heads, School-Based SHEP, SPED, Guidance & Counselling and Girls Cooordinator	Bechem					158 participants	Not in plan
294	Community sensitization on the reopening of SHS 3/Gold Track and JHS 3 Students	8 Communities					280 Head masters, Church Leaders, Community Leaders	Not in plan

2.3 UPDATE ON REVENUE SOURCES

Revenue sources for the Tano South Municipal Assembly can be broadly categorized into three namely: Internally Generated Funds (IGF), Decentralized transfers such as District Assembly.

Common Fund (DACF) Government of Ghana (GOG) and Donor Support or Donations. The DACF is made up of releases to the Municipal Assembly, Member of Parliament component, Persons with Disability (PWD) component, and Multi-Sectorial HIV/AIDS (MSHAP) component. The Donor Funds are drawn from the Canadian International Development Agency (CIDA) for the Modernization of Agriculture Project and the District Assembly Common Fund-Responsive Factor Grant (DACF-RFG) and Ghana Productive Safety Net programme. Table 2.3 shows the various revenue sources and amounts received against the year's target as at the end of December, 2020.

Revenue Item	Baseline (2019)	Target 2020	Actual as at 2020
IGF	527,766.43	676,564.00	582,532.92
Comp. Tran.(GoG)	3,391,550.34	3,017,091.00	4,380,289.60
DACF	1,726,425.09	3,675,175.00	1,888,739.49
MP's CF	381,602.94	386,000.00	331,181.51
PWDs CF	126,981.96	142,700.00	250,364.77
MSHAP	11,630.31	16,694.00	5,953.00
DPAT-RFG	1,024,291.65	1,344,551.00	548,978.90
CIDA (MAG)	143,587.29	143,588.00	144,228.85
GOG DEPT.	13,654.19	67,357.00	53,237.58
GPNSP	-	1,846,567.00	535,570.13
FREE WATER	-	-	359,964.02
TOTAL	7,203,902.91	11,316,287.00	9,081,040.77

Source: TSMA-Fin Dept, Trial Balance-December, 2020.

Table 2.3: Revenue Sources

From Table 2.3, the total revenue that accrued to the Tano South Municipal Assembly for 2020 was GH¢**9,081,040.77**

This represents an increase of 17.2% over the revenue realized in the 2019 and 19.75% short of the annual target of **GH¢11,316,287.00**

IGF in 2020 recorded a significant increase of 9.4% (GH¢**582,532.92**) over the amount realized in 2019 (GH¢**527,766.43**). However, collection for the period recorded a deficit of 21.4% as against the projected target. The Assembly over-achieved its annual revenue targets for 2020.

A total amount of GH¢1,888,739.49 was received under the DACF as the end of 2020 representing 51.4% of its 2020 projected target.

A total amount of GH¢548,978.90 was received under the DPAT-RFG as the end of 2020 representing 41% of its 2020 projected target.

An amount of GH¢144,228.85 was received under the CIDA Funds for the Modernization of Agriculture Project for 2020 representing 0.44% increase of the targeted allocation. With respect to MSHAP, GH¢5,953.00 was received as at the end of 2020 representing 64.3% short of the 2020 targeted allocation.

2.4 UPDATE ON EXPENDITURE

The Assembly expends its received revenue in any given quarter on planned and budgeted programmes, projects and activities. The main expenditure heads of the Assembly are Goods and Services, Investment and Assets. Details of the expenditure of the Assembly is shown in Table 2.4 below.

Table 2.4: Expenditure

Expenditure Item	Baseline (2019)	Target 2020	Actual as at 2020
Compensation	3,526,434.85	3,201,391.00	4,507,531.81
Goods & Services	1,828,360.05	3,819,255.00	2,794,912.02
Investment & Assets	1,647,675.26	3,965,641.00	1,483,681.98
Total	7,002,470.16	11,316,287.00	9,161,772.97

Source: TSMA-Fin Dept, Trial Balance-December, 2020.

From Table 2.4, the expenditure of the Assembly increased by 23.57% between 2019 (GH¢ 7,002,470.16) and 2020 (GH¢9,161,772.97). There was an increase in expenditure under all the expenditure items (Compensation, investments & Assets and Goods & Services). Compensation recorded the highest expenditure for 2020 followed by goods and services and lastly investment & assets.

Expenditure items performance fails to meet its 2020 performance target. This will impact negatively on the objectives of the Assembly in meeting the basic socio-economic needs of the Municipality.

2.5 Update on Performance of Core and Specific District Indicators

The implementation of programmes, projects and activities result in outputs and outcomes which contribute to meeting the objectives of the Assembly set for the Municipality for the year. Measuring the performance of these indicators at the end of the year, helps management of the Assembly to assess the level of achievements made in each quarter as well as the challenges encountered during the implementation of programmes, projects and activities in the quarter. This helps in reviewing the planned activities and strategies for the ensuing year. Table 2.5 below shows the performance of these indicators as at the end of 2020.

Table 2.5: Update on Core and District Specific Performance Indicators

	Indicator (Categorized by Development Dimension of Agenda for jobs)	Baseline (2019)	Target 2020	Actual 2020
	ECONOMIC DEVELOPMENT			
1.	Total Output in Agricultural Production			
	i. Maize (Mt)	2.3	2.36	2.6
	ii. Rice (Mt)	2.9	3.7	3.7
	iii. Cassava (Mt)	18.9	18.9	21.1
	iv. Pepper (Mt)	8.3	8.3	8.8
	v. Tomatoes (Mt)	8.4	8.4	8.9
	vi. Carrot (Mt)	6.81	6.0	6.81
	vii. Onion (Mt)	8.2	8.2	8.2
	viii. Cattle (Count)	445	500	445
	ix Sheep (Count)	5176	6,000	5,043
	viii. Goat (Count)	5,583	6,000	5851
	x. Pig (Count)	1,778	1,800	1,273
	xi. Local Fowls (Count)	22,058	30,000	27,463
	xii. Poultry Fowls (Count)	36,107	40,000	36,308
	xiii. Guinea Fowls (Count)	2,161	2,200	1,996
	xiv. Turkey (Count)	246	250	113
	xv. Duck (Count)	6,384	1,000	1,206
	xvi. Dog (Count)	1,175	1,300	1,283

	xvii. Cat (Count)	869	1,000	255
	xviii. Rabbit (Count)	484	600	663
	xix. Grasscutter (Count)	39	50	15
2.	Percentage of arable land (Ha) under cultivation	38	40	38
3.	Number of new industries established			
	i. Agriculture	32	40	23
	ii. Industry	25	30	5
	iii. Service	-	30	10
4.	Number of new jobs created			
	i. Agriculture	160	150	25
	ii. Industry	125	150	0
	iii. Service	-	150	40
SOCIAL DEVELOPMENT				
5.	Net enrolment ratio			
	i. Baseline	83.80	85.00	83.80
	ii. Primary	89.20	90.00	89.20
	iii. JHS	40.00	45.00	40.00
6.	Gender Parity Index			
	i. Kindergarten	0.97	0.98	0.97
	ii. Primary	0.98	0.99	0.98
	iii. JHS	0.85	0.90	0.85
	iv. SHS	0.70	0.90	0.70
	v. TVET	1.63	N/A	
7.	Completion rate			
	i. Kindergarten	88.80	95.00	88.80
	ii. Primary	97.40	98.00	97.40
	iii. JHS	72.40	80.00	72.40
	iv. SHS	76.80	80.00	76.80
8.	Number of operational health facilities			
	i. CHPS Compound	10	12	10

	ii. Clinic	1	2	1
	iii. Health Center	2	2	2
	iv. Hospital	1	2	1
9.	Proportion of population with valid NHIS card			
	i. Total (by sex) – Female	24,173	28,204	28,427
	Male	18,257	20,778	20,577
	ii. Indigent	395	1,674	6,598
	iii. Informal	13,649	14,363	14,591
	iv. Aged	1,890	2,613	1,917
	v. Under 18years	22,695	26,462	22,172
	vi. Pregnant women	1,596	1,437	1,653
	vii. SSNIT Contributor	2,003	2,284	1,858
	viii. SSNIT Pensioners	202	149	215
10.	Number of births and deaths registered			
	Birth (Total)	2,518	3,121	2,757
	Birth (sex) – Female	1,,294	1,424	1,337
	Male	1,224	1,697	1,420
	Death (Total)	175	500	152
	Death (sex) – Male	76	250	75
	Female	99	250	77
	Age group			
	0-1 years	07	50	08
	2-14 years	26	100	32
	15-60 years	127	150	68

	61+ years	144	200	44
11.	Percent of population with sustainable access to safe drinking water sources			
	i. Municipality	84.5	89.5	87.0
	ii. Urban	47.7	50.0	49.09
	iii. Rural	113.2	124.5	188.00
12.	Proportion of population with access to improved sanitation services			
	i. Municipality	68.9	73.9	72.5
	ii. Urban	55.0	60.0	58.75
	iii. Rural	14.0	20.0	17.25
13.	Maternal mortality ratio (Institutional)	47/100,000	0	0
14.	Malaria case fatality (Institutional)			
	Sex	0	0	0
	Age group	0	0	0
15	HIV/AIDS prevalence rate (% of adult population, 15-49yrs. HIV positive)	0.8	0.5	
16	Number of COVID-19 reported cases	-	100	596
17	Number of COVID-19 confirmed cases	-	5	109
	Number of recorded cases of child trafficking and abuse			
	i. Child trafficking (sex)	0		
	ii. Child abuse (Sex)	29		
18	Doctor: Population ratio	1:13,873	1:10790	1:10790
19	Nurse: Population ratio	1:511	1:500	1:279
	SAFEGUARD THE NATURAL ENVIRONMENTAL AND ENSURE A RESILIENT, BUILT ENVIRONMENT			
20.	Midwife: WIFA ratio	1:411	1:405	1:411

21.	Percentage of road network in good condition			
	Total	51.0	65.0	66.0
	Urban	22.9	25.9	32.0
	Feeder	28.1	38.1	44.80
22.	Percentage of communities covered by electricity			
	District	43.6	45.6	43.6
	Rural	40.4	42.4	40.4
	Urban	93.3	95.0	93.3
23.	Hectares of degraded forest, mining, dry wet lands rehabilitated			
	a. Forest	32,732	49,000	32,732
	b. Mining	-	-	-
	c. Dry and wetland	-	-	-
	GOVERNANCE CORRUPTION AND PUBLIC ACCOUNTABILITY			
24.	Reported cases of crime			
	Total	159	-	159
	Men	-	-	-
	Women	-	-	-
	Children	-	-	-
25.	Percentage of annual action plan implemented	71.2	80.0	70.38
26.	Number of communities affected by disaster	18	25	16
	Bushfire	14	20	13
	Floods	0	0	0
27	Police/citizen ratio	1:1,658	1:1,503	1:1,870
28	Number of water facilities available			
	Boreholes	150	160	156
	Small-town water systems	3	4	3
29	No. of household latrines	7,435	7,807	7,567
30	No. of ODF communities	11	15	11

Source: MPCU Secretariat- TSMA, Feb-2021.

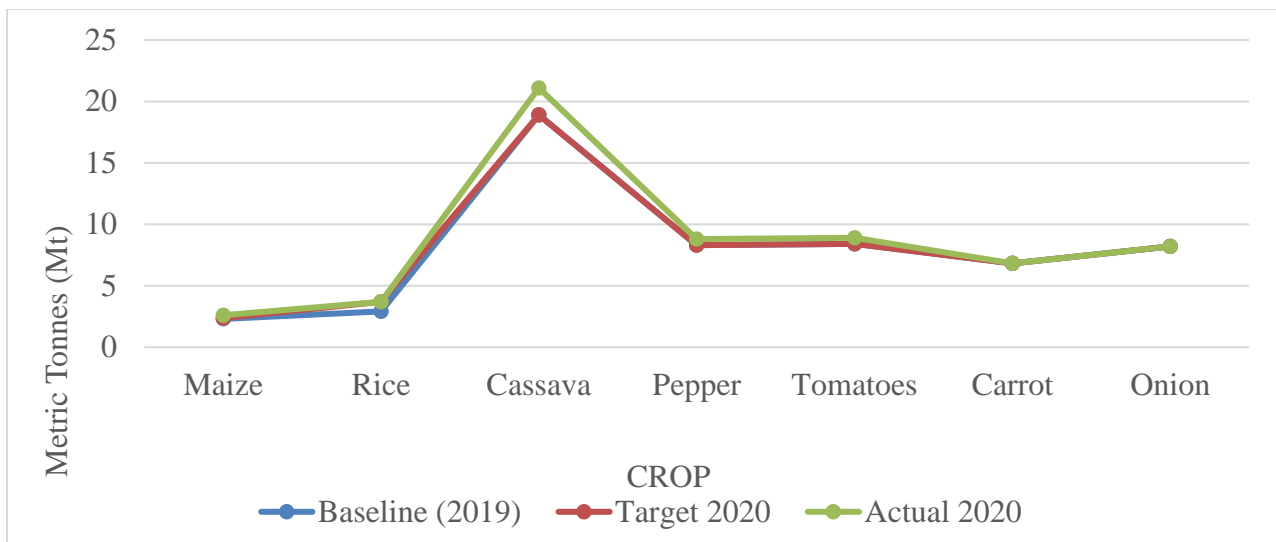
Performance of Economic Development Indicators

Five core indicators were used to measure the performance of the Municipality under the economic development dimension in 2020 with reference to the baseline performance in 2019 namely: total output in agricultural production, percentage of arable land (Ha) under cultivation, number of new industries established and number of new jobs created particularly as a result of government's economic policies and flagship programmes such as PFJ, PFJE, 1D1F and NABCO.

Total Output in Agricultural Production (Crop and Livestock)

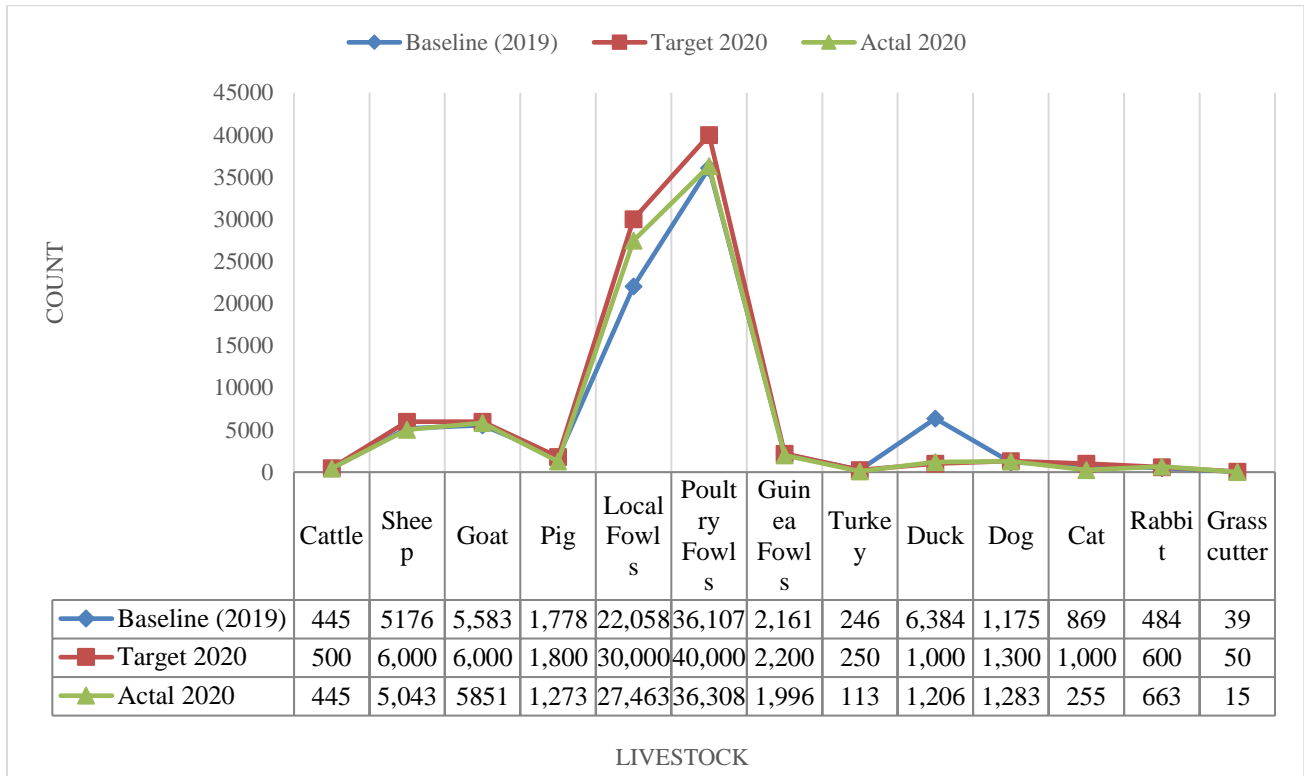
The performance of indicators with regards to agricultural production (crop and Animal) are shown in Figure 2.1 and Figure 2.2 respectively.

Figure 2.1: Total Output in Agricultural Production (Crop)



Source: MPCU Secretariat-TSMA, Feb-2021.

Figure 2.2: Total Output in Agricultural Production



Source: MPCU Secretariat-TSMA, Feb-2021.

Figure 2.2 a shows performance increase in 2020 in the total output in agricultural production for all crops except onion (which sustained its performance of 8.2Mt), carrot (which sustained its performance of 8.3). Crop production with highest percentage increase in production in 2020 was rice (21.62%) of its 2020 production, with pepper recording the lowest percentage increase (5.7%) of crop production in 2020. With respect to the level of achievement of set targets for 2020 for agricultural production, the production of maize, rice, cassava, tomatoes and carrot outperformed the targets set to achieve in 2020, whereas onion and rice met the target of 2020.

Figure 2.2 above shows performance increase in 2020 in the total output in agricultural production for Goat, local fowl and poultry fowl except cattle (which sustained its performance of 445Mt). With respect to the level of achievement of set targets for 2020 for livestock production, the production of Goat, local fowl and rabbit outperformed the targets set to achieve in 2020, whereas Cat, Duck and sheep and rice underperformed the targets set to achieve in 2020.

Arable lands under cultivation

The percentage of arable land (Ha) under cultivation still stood at 38 Ha as at the end of 2020.

In the area of industry, the number of new industries established in Agriculture increased above the achievement in 2019, with phenomenal performance increase of 18.5% (27 new industries in 2019 to 32 in 2020). However, in the area of new industries recorded a decrease of (66.7%).

The Number of new jobs created in Industry sub-sector also recorded no new establishment in 2020 whilst service recorded 40 new establishments. However, the Industry sub-sector recorded a decrease of (20.7%).

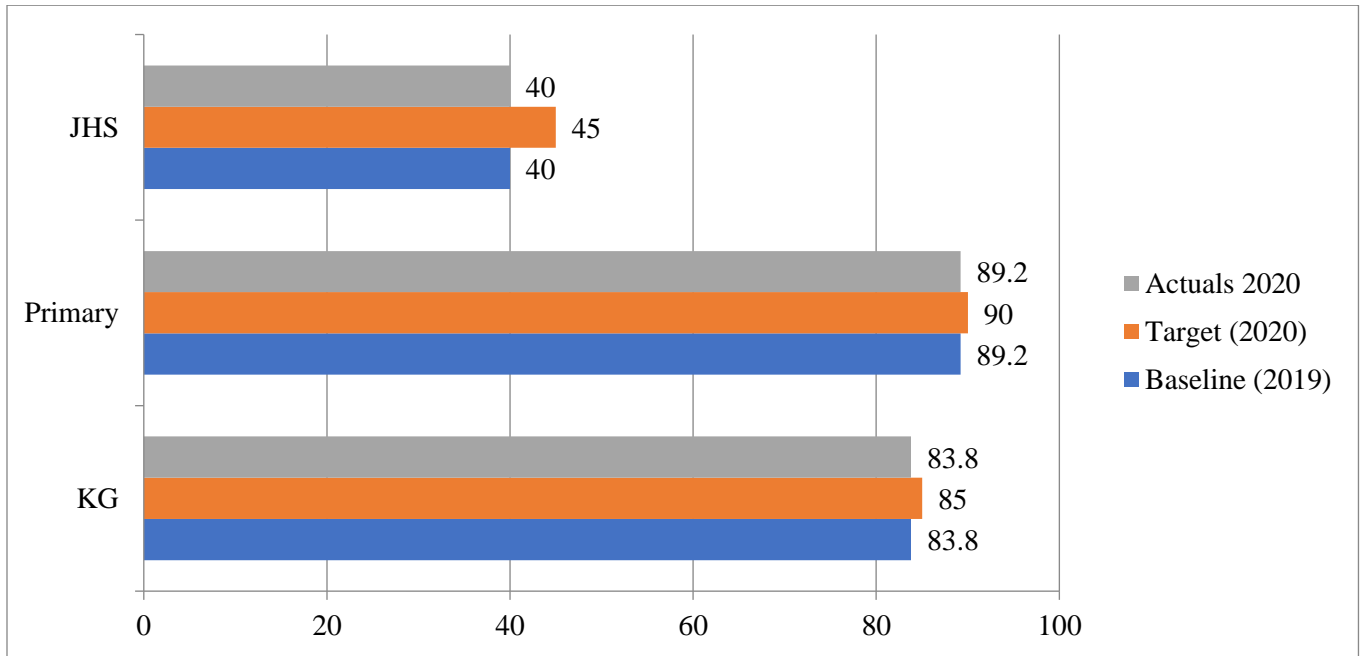
Performance of Social Development Indicators

The core performance measuring indicators under the Social Development Dimension are categorized under Education sub-sector, Health sub-sector, Birth and Death registration as well as Child trafficking and abuse.

Education Sub-Sector

Under the education sub-sector, core performance indicators reported on are: Net enrolment ratio, Gender Parity Index and Completion rate as contained in Figures 2.3, 2.4 and 2.5 respectively.

Figure 2.3: Net enrolment ratio

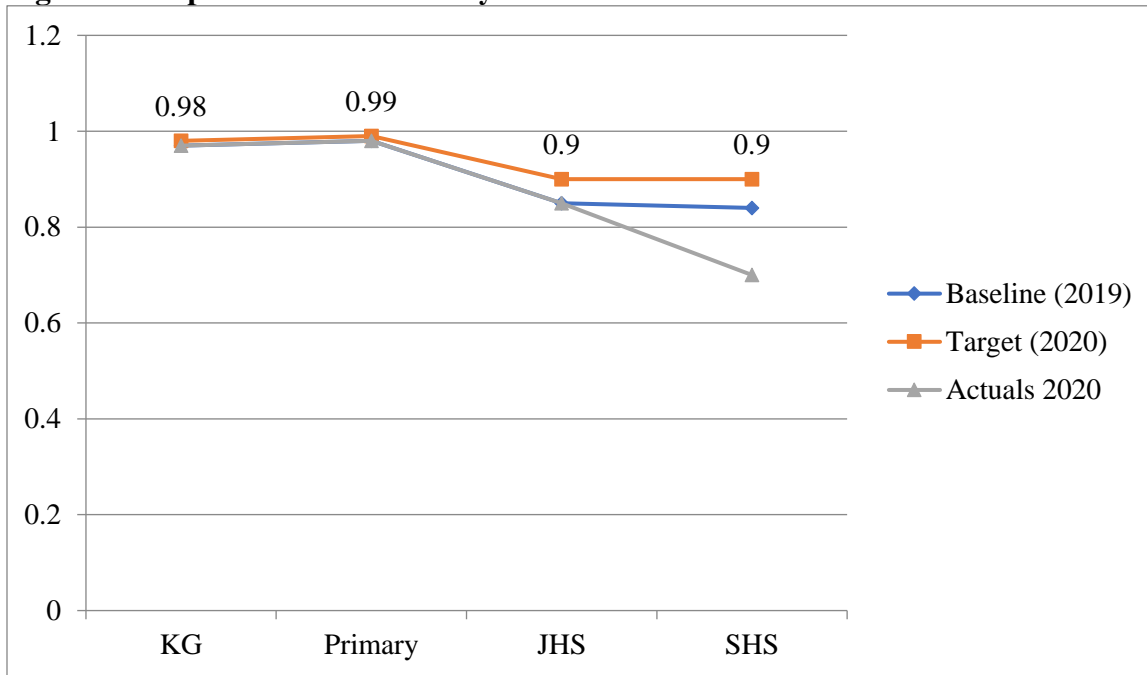


Source: EY&SD- TSM, Feb-2021

Figure 2.3 shows Net Enrolment Ratio at the KG, Primary and JHS level recorded same figure for 2019 and 2020. In addition, the performance of these indicators at all the levels was below the 2020 targets.

In the case of Gender Parity Index as indicated in figure 2.4, Kindergarten Primary, JHS and SHS recorded the same in the performance indicator in 2019 as well as 2020. Kindergarten, primary, JHS and SHS maintained its 2019 performance (0.97, 0.98, 0.85 and 0.7) respectively in 2020. The 2020 targets set for all levels were however not met.

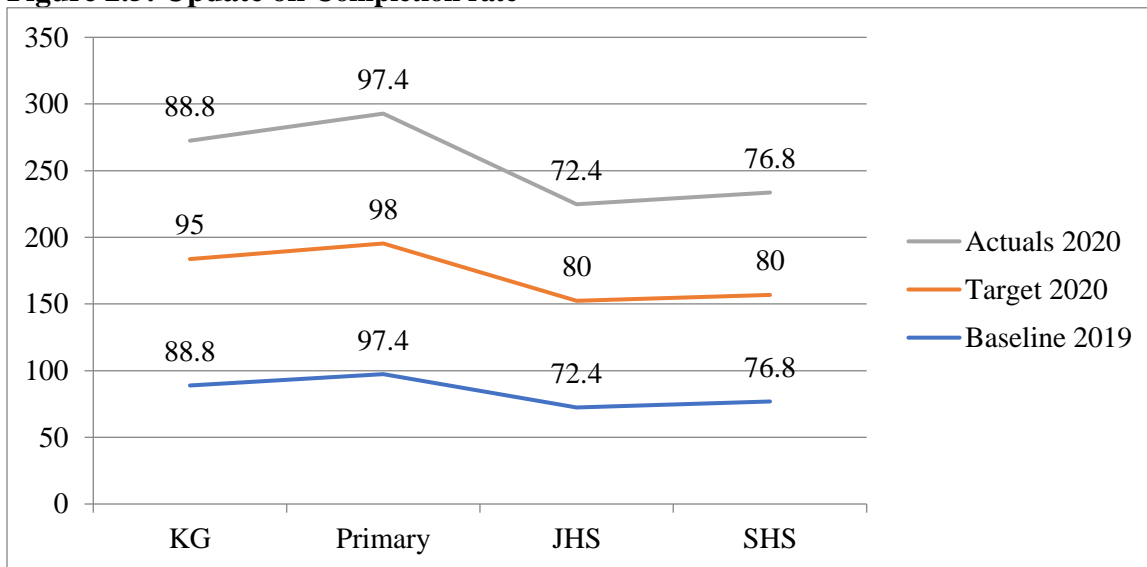
Figure 2.4: Update on Gender Parity Index



Source: EY&SD- TSM, Feb-2021

With regards to completion rate, Kindergarten, Primary, JHS and SHS maintained their 2019 performance in 2020 as shown in figure 2.5. Again, none of the targets set for all the levels was achieved by the end of 2020.

Figure 2.5: Update on Completion rate



Source: EY&SD- TSM, Feb-2021

Provision of stationery items to various level of Education

Government provided office stationery to Municipality as part of the preparation towards the re-opening of senior high schools. The items were handed to the Municipal Education Service to facilitate their administrative work. Registers, teachers note book, School Uniforms other items were distributed to the Municipal Education Service to distribute to the various schools and teachers. Table 2.6 shows this information.

Table 2.6: Distribution of stationery to educational institutions in the Municipality

S/N	ITEMS	QUANTITY
1	Led Bulb	1
2	Pen stamp	1
3	Seat cover	1
4	Linar cover	1
5	Marker pens	250
6	Royal 150 front Rim	1
7	Royal front shock Absorber	1
8	Driving mirror	1
9	Front Mudguard	1
10	Indicator light	2
11	Steer Bar	1
12	275-18 Tube	1
13	A4-a poster	99
14	A4-b poster	99
15	A3-a posters	99
16	A3-b poster	99
17	A2-a poster	99
18	A2-b poster	99
19	A1-poster	49
20	Jolly Phonics Book, Teachers Guide	866
21	Osolo Calculators	50
22	Jolly Phonics Book2	28409
23	Jolly Phonics Book1	11255

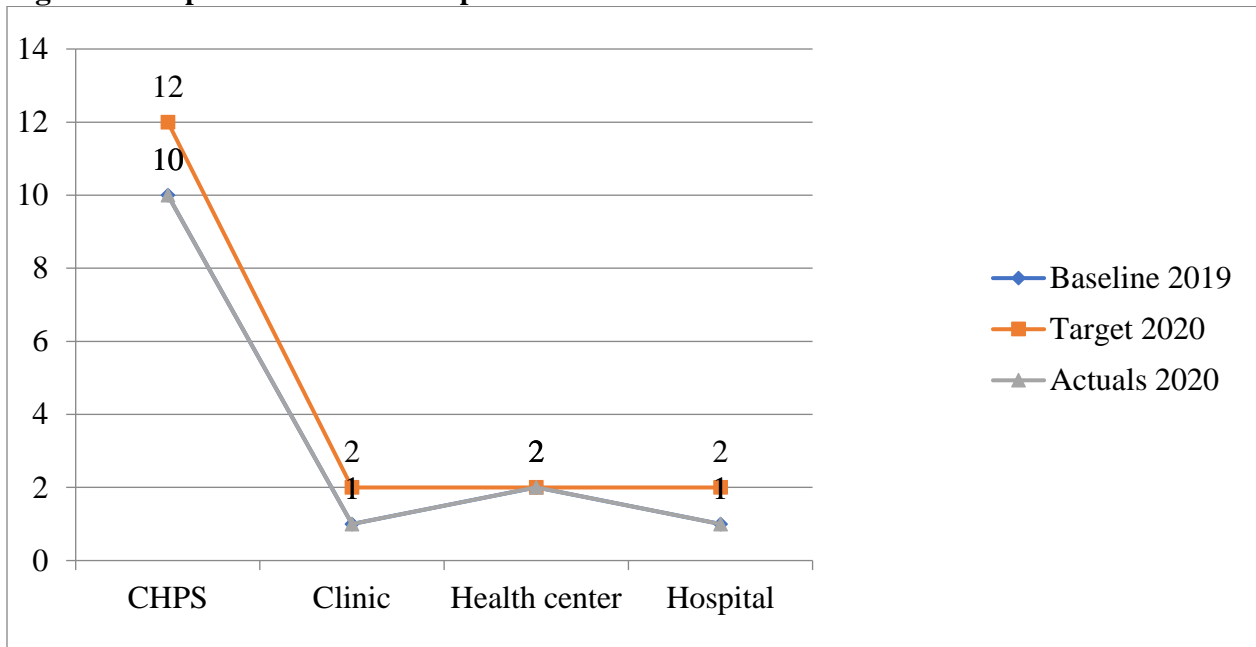
Source: EY&SD- TSM, Feb-2021

Health Sub-Sector

The core performance indicators reported on in the year under review are: Number of operational health facilities, proportion of population with valid NHIS, Maternal mortality ratio (institutional), and malaria case fatality (institutional). District-specific performance indicators reported on are: Doctor to population ratio, nurse to population ratio and midwife to WIFA ratio.

The number of functional health facilities in the Tano South Municipality did not record an increase in 2020 over the 2019 baseline. The number of operational CHPS Compounds remained the same in 2020. This is illustrated in figure 2.6

Figure 2.6: Update on Number of operational health facilities

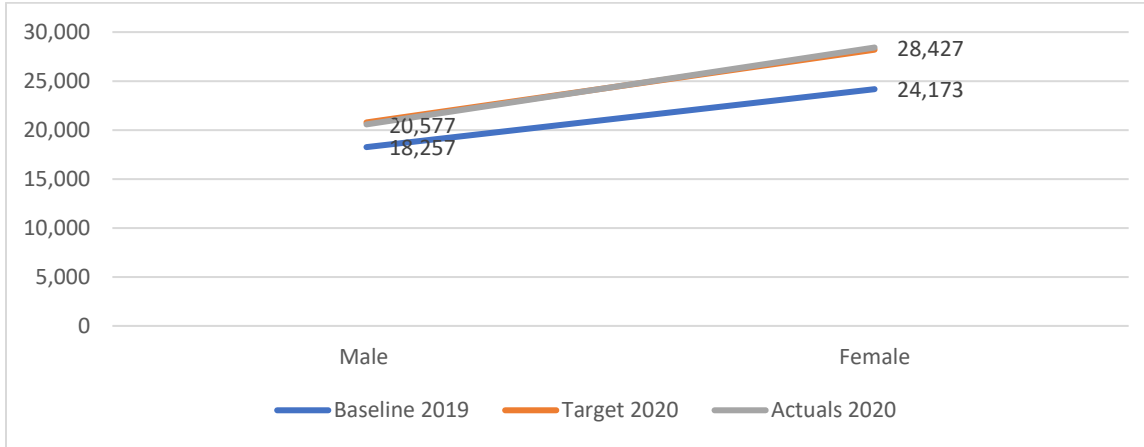


Source: Health Directorate- TSM, Feb-2021

From Figure 2.7 below, the proportion of the population with valid NHIS cards increased from 13.4% in 2019 from 42,430 to 49,004 as at the 2020. The proportion of males with valid NHIS cards recorded the highest percentage increase (11.3%) compared to female proportion (15.5%) in the year under review. With respect to categories of beneficiaries the proportion of informal with valid NHIS cards recorded the highest percentage increase of 27.7 in 2020. Pregnant women

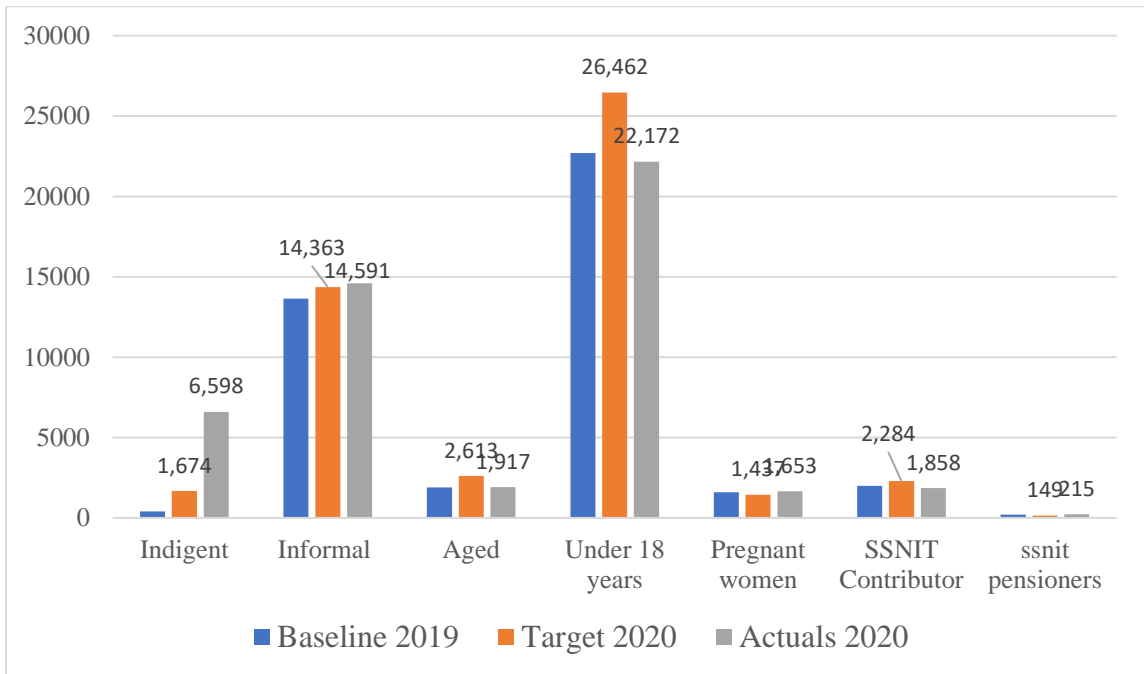
recorded the highest percentage decline (5.3%) of the proportion with valid NHIS cards from 2019 and 2020.

Figure 2:7: Update on proportion of population with valid NHIS card



Source: NHIA- TSM, Feb-2021

Figure 2:8: Update on Beneficiaries with valid NHIS card



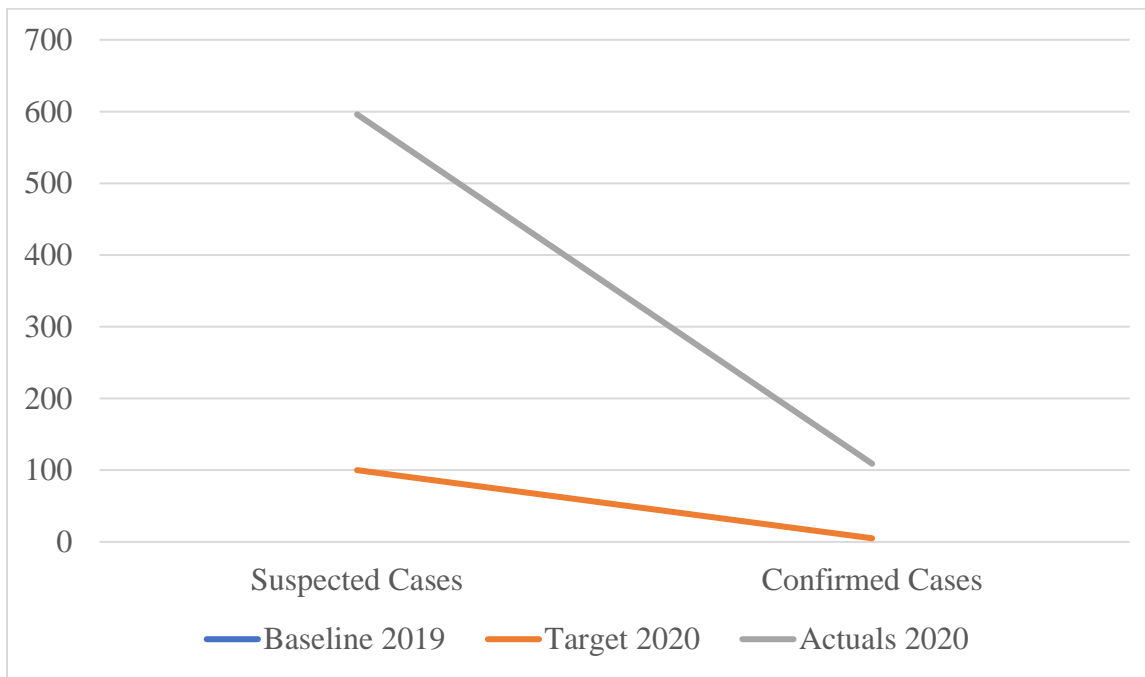
Source: NHIA- TSM, Feb-2021

Maternal mortality ratio improved with no new case recorded in 2020. Whiles malaria case fatality improved in performance in 2020 with no single case recorded.

The midwife to WIFA ratio in the Municipality performance remains the same of 2019 and 2020 (1:411) whereas doctor to population ratio 1:10790 in 2020 performance whilst nurse to population ratio recorded 1:279 at the end of 2020. The good performance of doctor to population and nurse to population ratios are attributed to the new postings of health professionals to the municipality.

Figure 2.8 also shows that 596 suspected COVID-19 cases were recorded in 2020 of which 109 cases were confirmed positive.

Figure 2:9 Update of Covid-19 cases

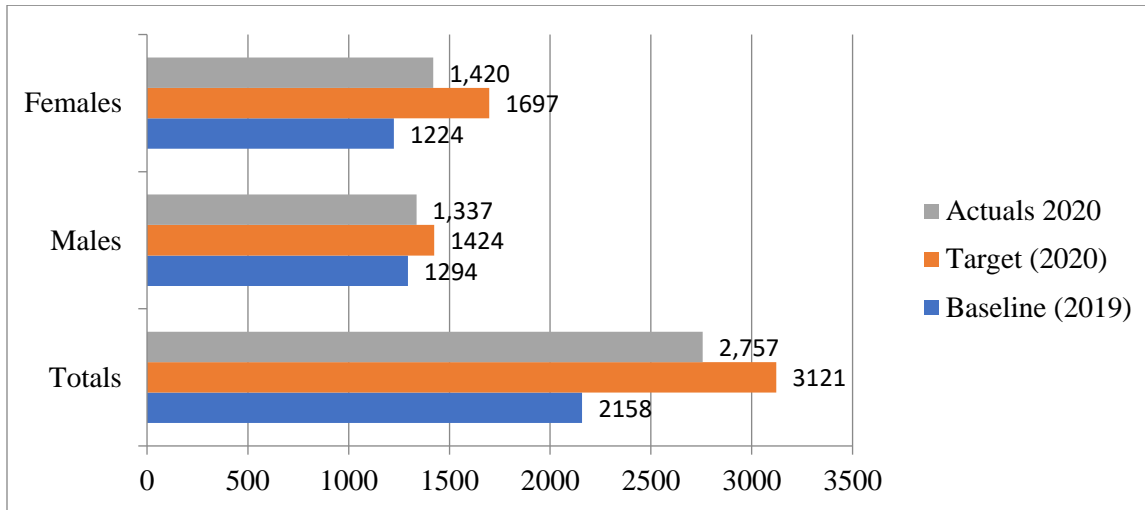


Source: Health Directorate- TSM, Feb-2021

Birth and Death Registration

The Municipal Assembly targeted to record a total of 2,757 births and 152 deaths by the end of 2020. The performance of these indicators is illustrated in figure 2.10 and figure 2.1 respectively.

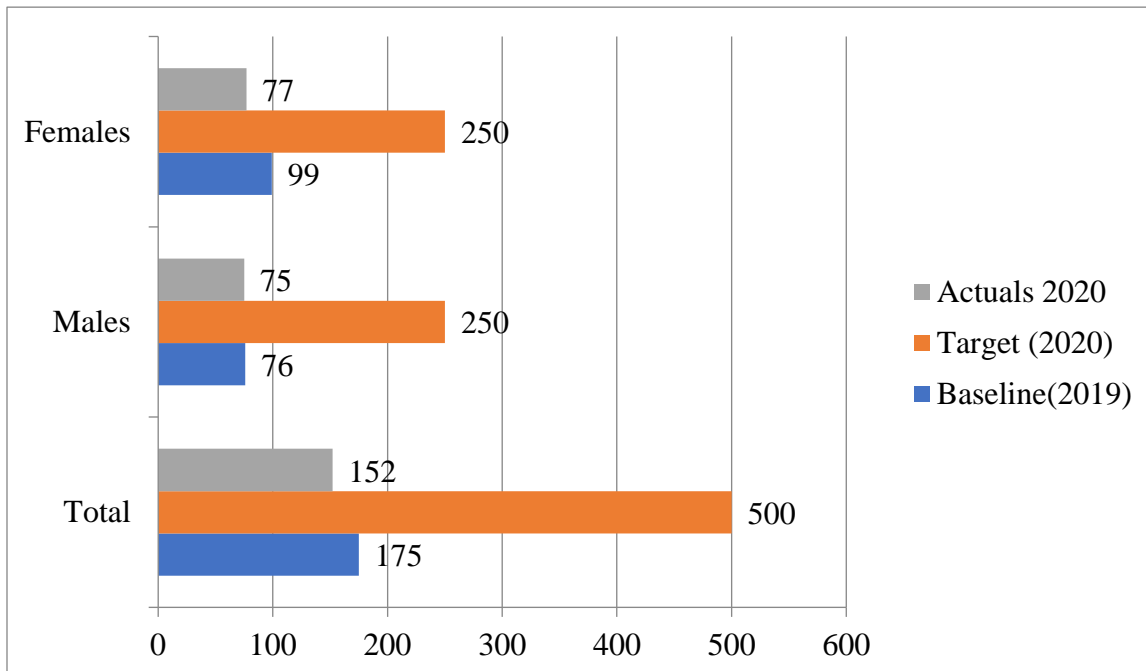
Figure 2.10 Number of Birth Registered



Source: Birth and Death Registry-TSM, Feb-2021

From Figure 2.10, total births registered in the Municipality in 2020 increased by 21.7% from 2,158 (2019) to 2,757 (2020). Both male and female birth registrations also recorded an increase in 2020 marginally from the 2019 figure. That is from 1,294 to 1,337 for male and 1224 to 1420 for female

Figure 2.11 Number of deaths registered



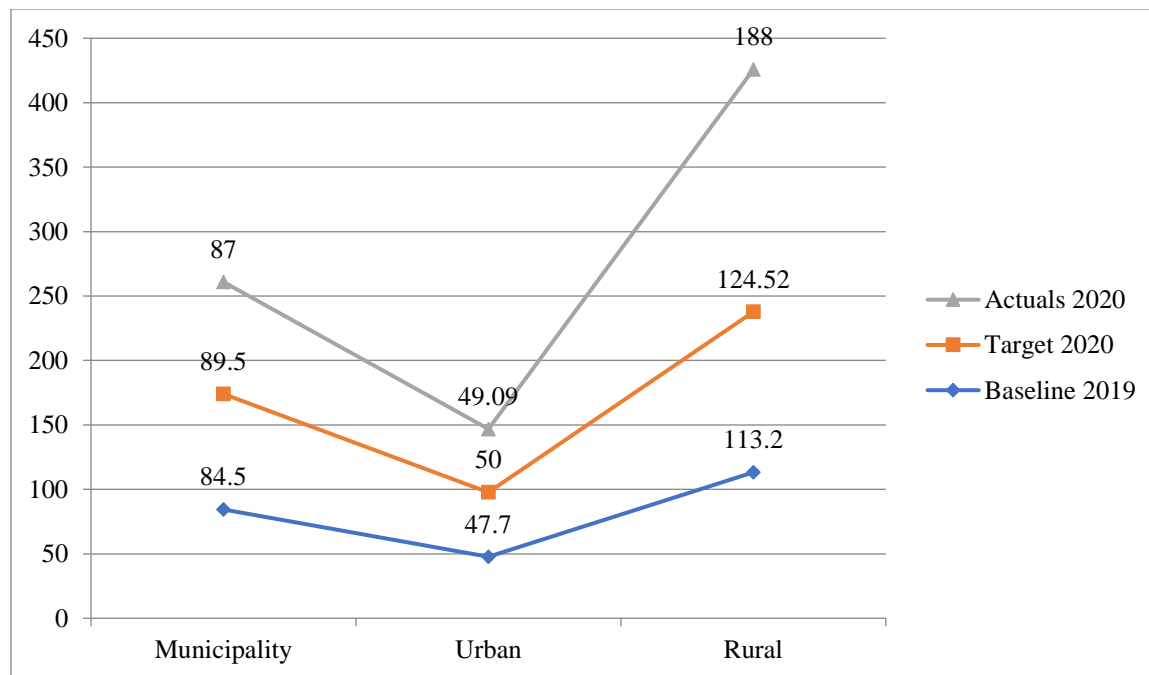
Source: Birth and Death Registry-TSM, Feb-2021

From Figure 2.11, unlike the number of births registered, the total number of deaths registered in the Municipality in 2020 decreased by 10.5% from 175 (2019) to 152. Both male and female deaths registered also decreased in 2020 as against the 2019 from 76 to 75 for male and 99 to 75 for female.

Water and Sanitation

Percentage of population with access to safe drinking water sources as well as Proportion of population with access to improved sanitation services are the two core performance measuring indicators reported on in the Tano South Municipality for the year under review. Figure 2.12 and Figure 2.13 below show the performance of the indicators under water and sanitation in 2020.

Figure 2.12 Access to safe drinking water

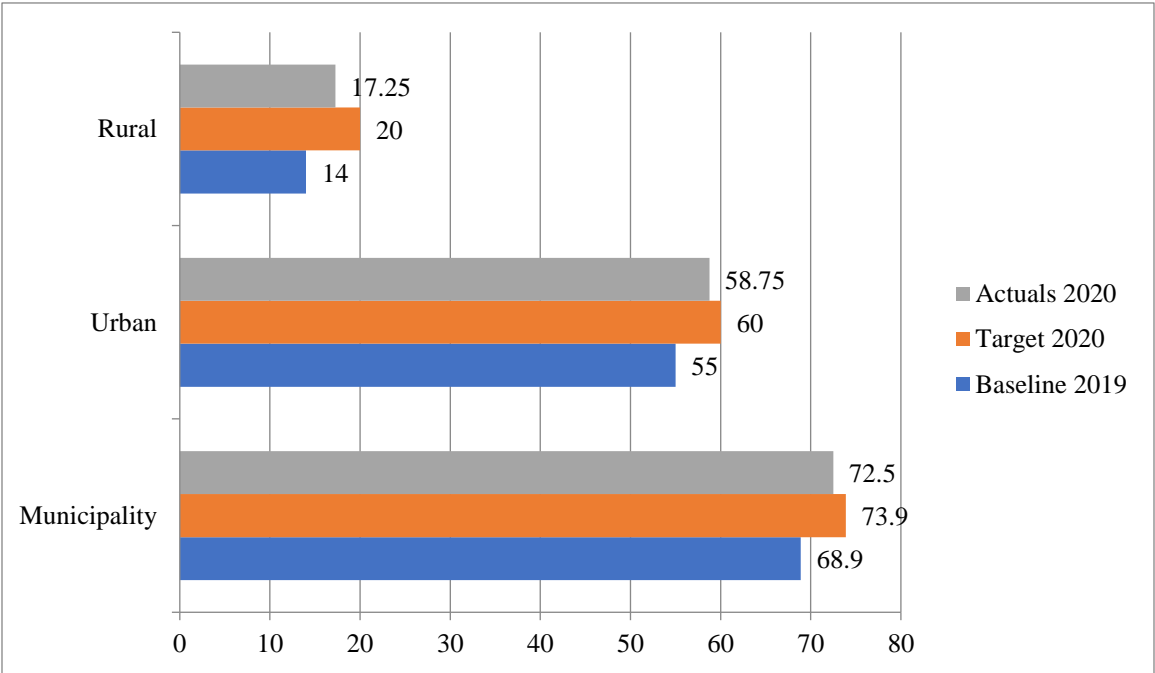


Source: MEHU-CAD, TSMA, Feb-2021

Figure 2.12 above indicates that the 2020 target of the Municipality for percentage of population with sustainable access to safe drinking water sources is 89.5%, with the Urban and Rural targets being 50.0% and 124.5% respectively. There was an increase in the performance indicator at the end of the 2020 over the achievement in the 2019. The percentage of population with sustainable access to safe drinking water sources increased by 2.5% from 84.5% in 2019 to 87.0% at the end of 2020. The percentage of urban population with sustainable access to safe drinking water sources

increased by 1.39% from 47.7% to 49.09% at the end of 2019 and 2020 respectively. However, the percentage of rural population with access to sustainable access to safe drinking water sources recorded the highest percentage increase of 4.8% from 113.2% at the end of 2019 to 118.0% in 2020. The Municipality fails to meet its 2020 target of the indicator by the end of the year.

Figure 2.13 Access to improved sanitation services



Source: MEHU-CAD, TSMA, Feb-2021

The targets for improved sanitation services in 2020 are 73.9% for the Municipality, 60.0% for Urban and 20.0% for Rural. From Figure 2.17 above, the various indicators recorded an increase from the 2019 achievements with the Urban performances recording the highest percentage increase of 3.75% (from 55.0% to 58.75%) followed by municipal recording an increase of percentage of 3.6% and lastly rural with a percentage increase of 3.25% . The Assembly needs to prioritize rural access to sustainable safe drinking water sources. The Municipality fails to meet its 2020 targets.

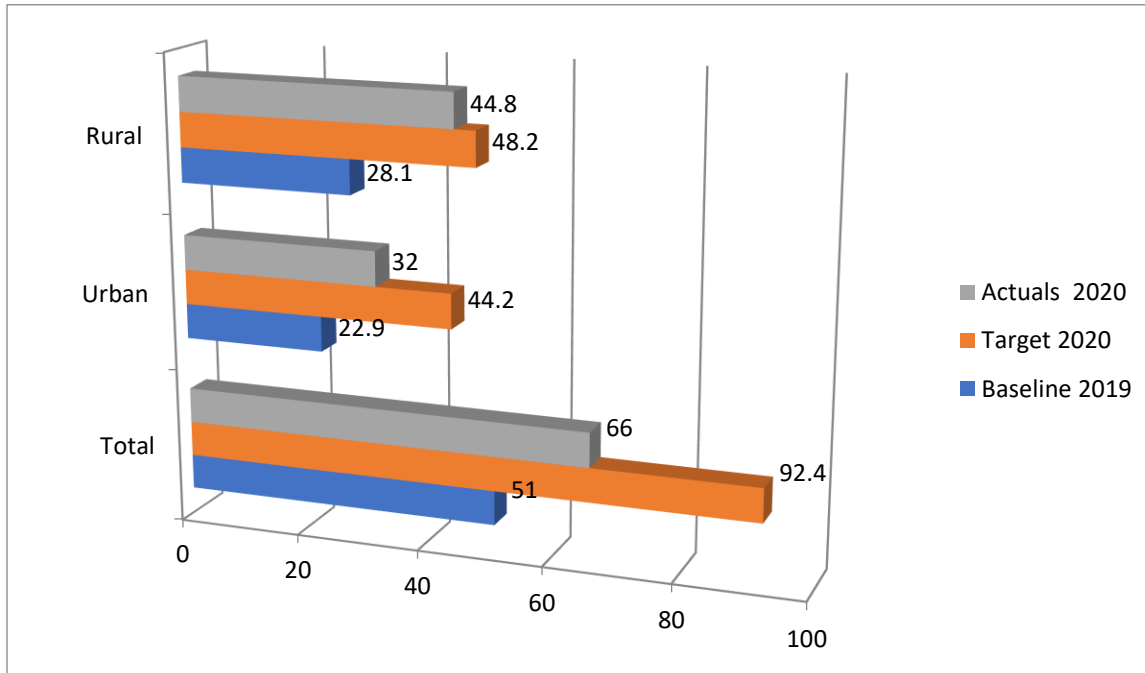
Performance of indicators under Safeguard the natural environmental and ensure a resilient, built environment Dimension

Two core performance indicators were reported on for the quarter under review namely: Percentage of road network in good condition and Percentage of communities covered by electricity.

Percentage of road network in good condition

The indicator relates to the condition mix of the road (surface, camber, drainage) referred to as good. The performance of the indicator is shown in figure 2.14 below.

Figure 2.14: Road network in good condition



Source: Works Department-TSMA, Feb-2021

The total percentage of road network in good condition increased from 51% (2019 baseline) to 66% in 2020. The percentage of urban road network in good condition recorded an increase of 7% from 2019 to the end of 2020 whilst the percentage of feeder road network in good condition increases from 12.8% 2019 to 2020. The assembly was not able to meet its year total target of 92.40%.

All Government of Ghana road projects have since been abandoned. Due to the erratic flow of the DACF, the Assemble could not reshape the roads in the Municipality to improve.

Performance of Governance, Corruption and Public Accountability Indicators

Core performance measuring indicators reported under Governance, Corruption and Public Accountability are: Reported cases of crime, Percentage of annual action plan implemented, and

number of communities affected by disaster. The Assembly also reported on its Police/Citizen ratio as a district-specific performance indicator.

Implementation of Annual Action Plan

The Tano South Municipal Assembly was able to implement 70.38% of its approved 2020 Composite Annual Action Plan (CAAP). This however fell short of the 80% target set for 2020 target. The inability of the Assembly to meet the target of 80% yearly plan implementation is partly due to the Covid-19 pandemic. Also, about 13.6% of total programmes and projects (54) outside the plan were financed from DACF. Much of the IGF received in 2020 was expended on recurrent expenditure with far less than 40% used for physical development developments as required. The DDF/DPAT augmented the Assembly’s plan implementation efforts especially in respect of physical development projects.

Bushfire and flood

With respect to bushfire, 13 cases were recorded in the Municipality as at December, 2020. In terms of flood there was no recorded case. There was however no loss of life and valuable property reported. The Assembly needs to sustain and intensify public sensitization campaigns in these areas.

2.7 Update on Critical Development and Poverty Issues in 2020

Table 2.7 below gives the various allocations under each intervention during 2020, the allocation, the actual amount received and the beneficiaries. From the table below, only the Livelihood Empowerment Against Poverty Programme received the total allocation for 2020.

Table 2.8: Summary of Allocations, Actual Receipts and Beneficiaries for 2020

Critical Development and Poverty Issues	Allocation GH¢	Actual receipt GHC	No. of beneficiaries	
			Targets	Actuals
Ghana School Feeding Programme	-	-	-	Male: 3,775 Female: 3,624 Total: 7,399
Capitation Grants	55,577.50	133,397.5	22,519	Male: 907 Female: 821 Total: 1,728
National Health Insurance Scheme	-	-	-	

Livelihood Empowerment Against Poverty (LEAP) programme	99,324.00	99,324.00	669 Households	Male: 125 Female: 413 Total: 538
National Youth Employment Program	-	--	-	-
One District – One Factory Programme				
One Constituency – One Million Dollars Programme				
Ghana Productive Safety Net Projects	330,000.00	375,647.16	Male: 173 Female:259 Total: 432	Male: 106 Female:255 Total: 361
Planting for Food and Jobs Programme	2,894,606	2,558,606.00		Male: 4,945 Female: 1,818 Total: 6,763
Free SHS Programme	435,890.21	664,851.00	2,085	Male: 2,085 Female: 1,792 Total: 3,877
National Entrepreneurship and Innovation plan (NEIP)	-	-	-	-
Implementation of infrastructural for Poverty Eradication Programme (IPEP)				
Nation Builders Corps (NABCO)	1,663,200	415,800	Total: 420	Male:102 Female:90 Total: 192
National Service Scheme (NSS)	395, 800.32	381, 423.36	Male:163 Female:73 Total: 236	Male:160 Female: 68 Total: 228

Source: TSMA –MPCU Secretariat, Feb- 2021.

2.6.1 Critical Development and Poverty Issues

Ghana School Feeding Programme (GSFP)

The number of schools benefitting from the programme by the end of 2020 was nineteen (19) with a total enrolment of 7,399. More boys than girls were enrolled in the beneficiary schools as indicated in the table 2.9.

Table 2.9: Beneficiaries of Ghana School Feeding Programme

2020			
Enrolment			Total
No. of Schools	Boys	Girls	
19	3,775	3,624	7,399

Source: Municipal Education Office, TSM, Feb-2021

Challenges under the GSFP

- Lack of kitchens and storerooms
- No variety in meals prepared for pupils
- Inadequate bowls to serve food for pupils
- Delay in payment of caterers

2.7 Corona Virus (Covid-19) Pandemic Situation

Response Activities

1. Formation of Municipal Covid-19 Response Team
2. Preparation of Covid-19 Response Plan
3. Public Education and Stakeholder Engagements
 - Meeting with GES on the protocols to follow before during and after school resumed
 - Meeting with all the chiefs and elders in Tano South
 - Training of teachers on how to use gun thermometers and other safety protocols

Distribution of Personal Protective Equipment (PPEs) in the Municipality

With the emergence of Covid-19, the Government through the Ministries of Local Government and Rural Development, Health and Education, Youth and Sports augmented the efforts of the Assembly by providing PPE's to be distributed to health facilities, schools, market places and lorry stations to help fight the spread and manage the effect of the pandemic in the Municipality. The Government also allocated an amount of GH¢166,000 to the Tano South Municipal Assembly to enhance sanitation and hygiene situation in market areas and lorry stations in combating the pandemic. The Bechem Town Water System as well as the Derma Area Rural Bank also donated towards the management of the pandemic in the year 2020. Table 2.9 and Table 2.10 respectively detail the distribution of PPEs to health facilities and schools.

Table 2.10: Distribution of PPES to Health Facilities in the Municipality

No.	FACILITIES	EXAMINATION	FACEMASK	PROTECTIVE	TOTAL
1	Derma Health Centre	100 Pieces	50 Pieces	2	152
2	Brosankro Health Centre	100 Pieces	50 Pieces	2	152
3	Subriso CHP Compound	25 Pieces	15 Pieces	1	41
4	Asuboi CHP Compound	25 Pieces	15 Pieces	1	41
5	Dwomo CHP Compound	25 Pieces	15 Pieces	1	41
6.	Kwasu CHP Compound	25 Pieces	15 Pieces	1	41
7.	Techimantia Polyclinic	100 Pieces	50 Pieces	0	150
8.	Mawaninso CHP Compound	20 Pieces	15 Pieces	1	41
9.	Breme CHP Compound	20 Pieces	15 Pieces	1	41
10.	Nsuta CHP Compound	20 Pieces	15 Pieces	1	41
11.	Mansin CHP Compound	20 Pieces	15 Pieces	1	41
12.	Ankaase CHP Compound	20 Pieces	15 Pieces	1	41
13.	Adaa CHP Compound	50 Pieces	10 Pieces	1	61
14.	R.C. H Center	20 Pieces	10 Pieces	4	34
15.	Bechem Government Hospital	0 Pieces	50 Pieces	15	65
16.	Municipal Health Directorate	50 Pieces	50 Pieces	0	100
	TOTAL	620 Pieces	405 Pieces	33	1,083
	TOTAL BALANCE	230 Pieces	5 Pieces	31	266

Source: Health Directorate-TSMA, Feb- 2021

The Health facilities that received PPEs from the government were made up of ten (10) CHPS Compounds, three (3) Health Centers, one (1) Polyclinic and one (1) Government Hospital. The

Municipal Health Directorate also received some of the PPEs to enable them carry out various activities in respect of combating the pandemic. Table 2.9 shows that a total of 1,083 assorted PPEs were distributed to the health facilities by the end of 2020. These comprised of 620 pieces of Examination equipment, 405 pieces of Facemasks and 33 Protective equipment.

Table 2.11: Distribution of PPEs to educational institutions in the Municipality

S/N	PPE	Total no. of items
1	Facemask	40,170 pieces
2	Soap	1,589 Gallons
3	Hand Sanitizer	37,500 Bottles
4	Tissue Paper	10,287 packs
5	Veronica Buckets	372 Pieces
6	Thermometer Gun	290 Pieces
Total		

Source: MEYS-TSM, Feb-2021

The government provided PPEs for the reopen of Schools to enable them continued their academics amidst the pandemic. Table 2.10 shows that a total of 39,373 PPEs comprising of 40,170 pieces of facemasks, 1,589 gallons of soaps, 37,500 bottles of hand sanitizers, 10,287 packs of tissue paper, 372 of veronica buckets and 290 of thermometer gun were distributed to educational institutions by the end of 2020.

Table 2.12: Covid-19 Case Study Analysis

Sub-Municipal	Suspected Cases	Confirmed Cases	Imported Cases
Bechem	287	90	0
Brosankro	19	6	1
Derma	88	2	1
Techimantia	103	11	0
Total	487	109	2

Source: Health Directorate-TSMA, Feb, 2021

Table 2.12 indicates that a total of seven (487) cases were recorded suspected in the year 2020, two hundred and eighty seven (287) from Bechem, nineteen (19) from Brosankro, eighty eight (88) from Derma and one hundred and three (103) from Techimantia.

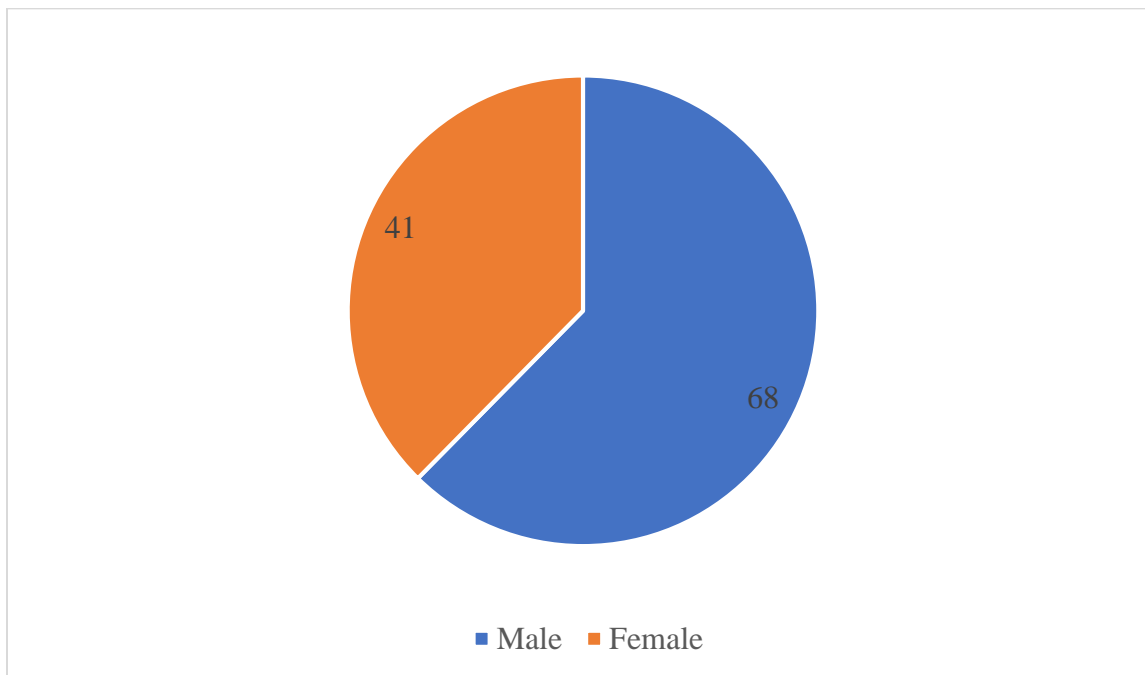
Confirmed cases recorded at the end of the reporting period were one hundred and nine (109), ninety (90) from Bechem, six (6) from Brosankro, two (2) from Derma, and eleven (11) from Techimantia.

Imported cases recorded at the end of the reporting period were two (2), one (1) from Brosankro and one (1) from Derma.

Gender Distribution of Confirmed Cases

The figure 2:15 below shows gender distribution of confirmed cases in 2020. The total percentage of number of male confirmed cases in 2020 was 62.38%.

Figure 2:15 Gender distribution of confirmed cases



Source: Health Directorate-TSMA, Feb- 2021

Livelihood Empowerment Against Poverty (LEAP)

The Municipality by the end of 2020 completed one (5) LEAP cycle cash payments. During the year under-review, all the 25 LEAP Communities comprising of 538 households received the grants. The total amount paid during the 1 LEAP cycle cash payments was GH¢99,324.00. Sensitization on LEAP issues were done virtually in all the 25 LEAP Communities. A total of 532 NHIS cards of LEAP beneficiaries were renewed to enable them access free health care.

Update of Register of Persons with Disability (PWD)

The database of PWD is updated at the end of each year to enable the Assembly plan well for their needs. Table 2.12 details the update of PWD disaggregated by sex in the end of 2020.

Table 2.13: Number of PWDs registered

Sex Segregation	Number of PWDs	Percentage
Male	362	50.9
Female	376	49.1
TOTAL	738	100.00

Source: DSW&CD- TSMA, Feb- 2021

From Table 2.12, a total number of 738 PWD was recorded at the end of 2020. The number of female PWD registered constituted 49.1% while number of male PWD registered represented 50.9%.

Logistical Support to PWDs

A variety of support items were received by PWD for 2020. These were made up of an artificial limb, support for a surgery and transparent facemasks. In all, **One hundred and sixty-one (161)** equipment and tools were distributed to PWDs in the year under the consideration. The figured comprised of **Seventy-seven (77) males** and **eighty-four (84) females**. Table 2.13 gives the details of the support received.

Table 2.14: Support to PWD received

EQUIPMENT	QUANTITY
Double Door Freezer	56

Deep Freezer	41
Fufu Pounding Machine	22
Butterfly sewing machines	14
Knitting machines	2
Industrial sewing machines	2
Wheel barrows	3
Wheel chairs	1
Grinding machines	2
Pop-corn machines	1
Bread oven	1
Kente weaving thread	1
Spraying machines	8
Pumping machines	2
Soap making tools	1
Cutlass sharpening tools	1
Shoe repairing tools	1
Plastering tools(mason)	1
Assistive device	1
TOTAL	161

Source: DSW&CD- TSMA, Feb-2021

CHILD AND FAMILY WELFARE SECTION

Statutory work with family and children.

During the year under review, fifty-three (53) cases were recorded; the breakdowns are as follows. Sixteen (16) child maintenance cases were recorded, thirteen (13) successfully resolved and three (3) withdrawn for home settlement. No paternity case was recorded for the year under consideration. Ten (10) General welfare cases recorded, and nine (9) successfully resolved and

one (1) withdrawn for home settlement. Eight (8) Housing and Rent cases were referred to the Rent Control for further action. Eight (8) child custody cases were recorded under the year, six (6) successfully resolved and two (2) on pending for further action. Eleven (11) counselling and reconciliation cases were recorded under year, nine (9) cases were satisfactory resolved with the cooperation of parties and their family whilst two (2) cases withdrawn for home settlement. The table below explains the above information.

Table 2.15: Child Welfare Service

TYPE OF CASE	B/F	NEW	TOTAL	SUCCESSFUL	WITHDRAWN	REFERRE D	PENDIN G
Child Maintenance	-	-	16	13	3	-	
Paternity	-	-	-	-	-	-	-
General welfare	-	-	10	9	1	-	
Housing related cases	-	-	8	-		8	-
Child custody	-	-	8	6	-	-	2
Counselling and reconciliation	-	-	11	9	2	-	-
Total	-	-	53	37	6	8	2

Source: DSW&CD- TSMA, Feb- 2021

National Service Scheme (NSS)

Two hundred and twenty-eight (228) National Service Personnel made up of 160 males and 60 females were received in the Municipality for the 2019/2020 period out of an expected two hundred and thirty-six (236) personnel. These personnel served at various departments, institutions and agencies in the Municipal. A total of GH¢381, 423.36 was expended in the form of allowances to the service personnel by the end of 2020.

One District One Warehouse

No initiative was started in respect of the One District One Warehouse Initiative by the end of 2020.

Nation Builders' Corp (NABCO) Programme

Out of an estimated target of 420 NABCO trainees to be enrolled under the seven modules (Civic Ghana, Educate Ghana, Heal Ghana, Revenue Ghana, Digitize Ghana, Feed Ghana and Enterprise Ghana) for 2020, 198 trainees were actually engaged. An amount of GH¢415,800.00 was expended in respect of allowances of the trainees.

2.7 Evaluations conducted, their findings and recommendations

Table 2.16: Update on Evaluations Conducted

Name of the Evaluation	Policy/Programme/ project involved	Consultant or resource persons involved	Methodology used	Findings	Recommendation
Purposive (Outcome of provision of Health Facility)	Completion and Furnishing of 1No. CHPS Compound (ward, consulting room, injection room, recovery ward, 2 washrooms) drilling and mechanization of borehole and provision of 2500L overhead poly-tank at Breme	MPCU	-Visit to facility -Interviews with health personnel at the facility and Community Facility Management Committee	<ul style="list-style-type: none"> • Improved access to health care service • Improved deliveries • Little or no transportation cost in accessing primary health care services • Reduced cost in time in accessing primary health care services • Existence of CHPS compound management committee to ensure it functional and sustainable use • Facility records low OPD attendance because facility is not NHIS accredited • Health facility is understaffed 	<ul style="list-style-type: none"> • Put in place measures to ensure the facility is NHIS accredited • More health personnel needed (NABCO trainees could be posted to the facility to help nurses) • The need for a KVIP toilet to be constructed for patients/clients that visit the facility • Need for a placenta pit at the facility for proper disposal of waste • Need for provision of street light in front of the CHPs to enhance security • Provision of signboard needed to showcase existence of the facility • Need for provision of window caps to prevent

				<ul style="list-style-type: none"> • No placenta pit for proper disposal of waste • No street light to brighten around the CHP in the night • No signboard to the CHP facility • Rainwater enters facility through windows during storms 	rain water from entering facility during storms
Time-based (Terminal)	Completion of 1No. 16 - Seater Aqua Privy Toilet at Kwasu	MPCU	Interview with the Assembly Man	<ul style="list-style-type: none"> • No signboard indicating the existence of the facility. • Facility is not functional (not connected with electricity, no labelling of Male/Female sections) • The platform for poly tank too high to harvest water if that is the intent. • Community members still resort to open defecation 	<ul style="list-style-type: none"> • Project should be made functionally usable and handed over to community for immediate utilization
Time-based (Ex post)	Complete the renovation of 1 No 6-	MPCU	Interview with the Assistant	<ul style="list-style-type: none"> • No signpost indicating the 	<ul style="list-style-type: none"> • Management of the Assembly should resolve

	unit classroom block at Anglican School		Head Master and Teachers and Assembly Man	<p>existence the facility</p> <ul style="list-style-type: none"> • Removal of fixtures i.e. windows • Problem with the main gate as it doesn't properly lock 	findings by providing signpost, removing fixtures and fix the main gate
--	---	--	---	--	---

2.8 Participatory Monitoring and Evaluation (PM&E) Approaches used and the Results

During the year under review, the Community Score Card and Citizen Report Card tools were employed.

Table 2.17: Update on PM&E Conducted

Name of the PM&E tool	Policy/Programme /project involved	Consultant or resource persons involved	Methodology used	Findings	Recommendation
Community Score Cards	Ghana Productive Safety Net Project: Rehabilitation of Woraponho Junction – Woraponho Feeder Road (1.8km)	MPCU/CSO(SODI A)	<ul style="list-style-type: none"> Meeting with Labour Intensive Public Works (LIPW) participants on the project as well as the Contractor and his Supervisor to the project 	<ul style="list-style-type: none"> Delay in execution of the project. Delay of wages to LIPW beneficiaries 	<ul style="list-style-type: none"> Zonal Office to facilitate contracting of Participating Financial Institution (PFI)-Derma Community Bank to execute payments Zonal Office and Assembly should ensure timely execution of project by the contractor.
Citizen Report Cards	Construction of Piped Water System at Brosankro	MPCU/CSO(SODI A)	<ul style="list-style-type: none"> Meeting with staff of System's office, Community Safeguard Team, Assembly persons and opinion leaders 	<ul style="list-style-type: none"> Hardness of water at Old Brosankro making it unsafe for drinking Communication gap between System's office and Community Household connection fee of GH¢600.00 	<ul style="list-style-type: none"> Need for bleeding of two pump houses at Old Brosankro to reduce the hardness of water Establishment of proper channel of communication between System's office and Community

				not affordable for the average household	<ul style="list-style-type: none"> • Need for a percentage of proceeds accrued by the System's Office allocated for community development projects • Need to System's Office/CWSA to reconsider cost of connection fee for extension to individual households
Citizen Report Cards	Complete the renovation of 1 No 6-unit classroom block at Anglican School	MPCU/CSO(SODI A)	<ul style="list-style-type: none"> • Meeting with Acting Head Master and Teachers of the School, Assembly Member 	<ul style="list-style-type: none"> • No signpost indicating the existence the facility • Removal of fixtures i.e. windows • Problem with the main gate as it doesn't properly lock 	<ul style="list-style-type: none"> • Management should correct all defects on the building as it poses threat to the student's safety.

CHAPTER THREE

CONCLUSION AND WAY FORWARD

3.1 Way Forward

Key issues addressed in 2020

- Successful implementation of programmes/projects/activities to combat Covid-19

Key issues to be addressed include:

- Build capacity of MPCU, Zonal and Unit Committee members on planning, budgeting and monitoring and evaluation.
- Strengthen plan implementation and expenditure tracking and reporting to ensure compliance to budgetary allocations and targets.
- No socio-economic database base of the Municipality for planning purposes (especially for revenue mobilization)
- Non-submission/late submission of quarterly and annual progress reports by HODs following prescribed formats

3.2 Recommendations

Recommendations by the MPCU include the following:

- Directive for creation of DPCU Sub-account at MMDAs into which operational funds are lodged
- DACF Administrator should set aside a percentage of the DACF to finance DPCU activities
- NDPC, MOF & MLGRD should provide additional funding support/sources for DPCU annual activities
- NDPC,MOF & MLGRD should sanction non-adherence of MMDAs to approved Plans and Budgets
- NDPC and RCC-RPCU should organize regular capacity training programmes for DPCU members and HODs as well as intensify monitoring of MMDAs

3.3 Conclusion

The Tano South Municipal Assembly implemented 70.38% of its Composite Annual Action Plan for the year 2020, under the Government's Policy framework – Agenda for Jobs: Creating Prosperity and Equal Opportunity for All (2018-2021). Various levels of implementation of programmes, projects and activities were achieved. There was also gains in the performance of some core and district-specific indicators especially in agricultural production, while others were negatively affected due to the Covid-19 pandemic especially internally generated funds and education. The reporting period was without challenges for plan implementation. Lessons were learnt to guide future planning and plan implementation. Implementation of the recommendations in this report will enhance quality and efficient service delivery by the Assembly in future.